

Drainage lifting station Hebefix V (mounted in a system duct)

Application

Drainage lifting station Hebefix V is an easy-to-install appliance to remove faeces-free wastewater upstream or downstream of the backpressure level. The system has been designed specifically for the use mounted in a system duct, but on account of the little space required (approx. 15 l volume) it can also be used in other locations, such as base units of kitchen. All grey water suppliers can be connected, which means hand wash basins, showers, bathtubs, sinks, washing machines, et cetera.

The grey water is pumped to the next downpipe through a small-dimensioned pressure pipe.

Hebefix V can be used wherever the additional installation of a bath or a kitchen is requested during renovation or rebuilding work. In the bathroom this product supplements WCfix 260 V excellently, to which no bathtub or washing machine may be connected in keeping with German / European standard DIN EN 12050-3.

For acoustic failure message, Hebefix V has been provided with an alarm system with reed contact switch.

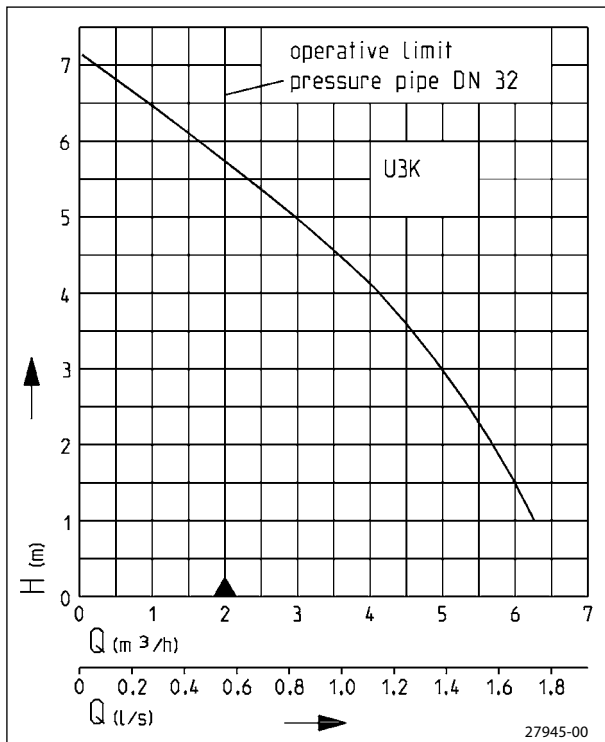
The unit is supplied with submersible motorised pump U 3 KS mounted which is ready to be plugged to a safety socket, operating fully automatically as soon as the waste-water flows in. When installed in bathrooms and shower rooms, the corresponding German VDE regulations have to be observed !

A sufficiently large inspection opening has to be provided for installation and servicing work (accessories). The unit is in conformity with the specification of German / European standard 12050.



Hebefix V (pump included in the scope of delivery)

Performance



We reserve the right to change specifications without notice
 Pump performance is subject to ISO 9906 tolerances
 The minimum flow velocity in the pressure piping must be 0.7 m/s according to EN 12056.
 This data is represented in the performance curve as a limit of application.

- Quiet
- Ready to connect
- Easy to maintain
- Pressure-tight
- Ventilation system
- Alarm system
- Single-vane impeller



Drainage lifting station Hebefix V (mounted in a system duct)

Hebefix V

Type	Height x width x depth	Cable	Weight approx.	Code No.
Hebefix V	320 x 420 x 180 mm	1.5 m	6.2 kg	09360
Accessories:				
Mounting kit for maintenance opening (flexible adapted to tile pattern - min. 400 x 500 mm)				41075
Stop valve 1¼"				11836
Rechargeable battery for mains-independent alarm				07562

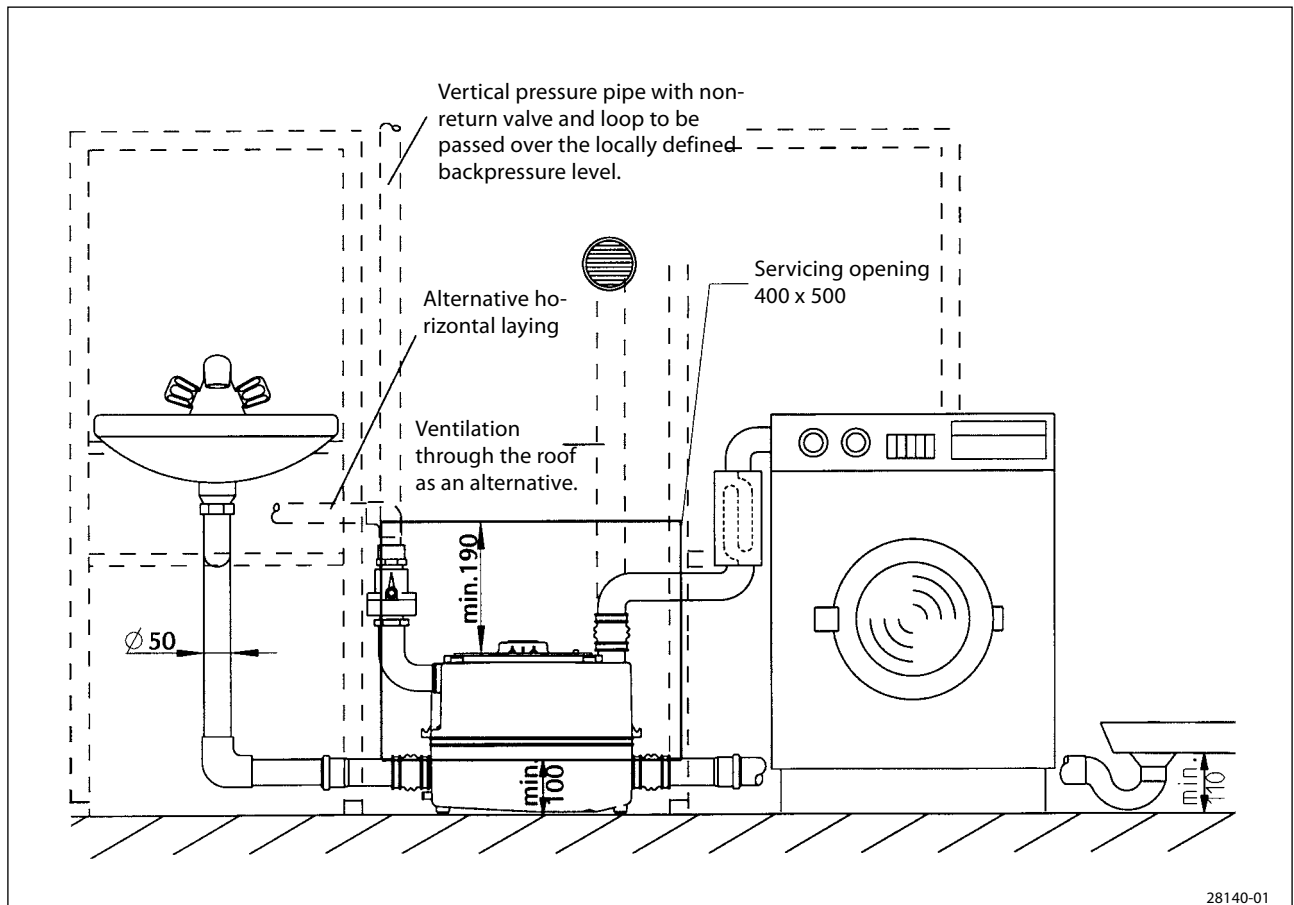
Performance

Type	Delivery head H [m]	1	2	3	4	5	6
Hebefix V	Flow rate Q [m ³ /h]	6.5	5.5	5.0	4.0	3.0	1.5

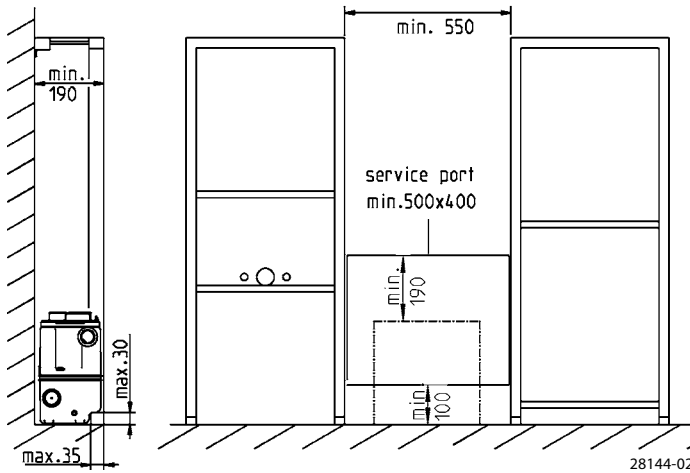
Electrical data

Type	Type of current	Voltage Volt	Motor rating kW		RPM min. ⁻¹	F.L.C. Ampere	Motor protection	Plug
			P ₁	P ₂				
Hebefix V	1-phase	1/N/PE~230	0.32	0.20	2720	1.4	in the winding	Safety-

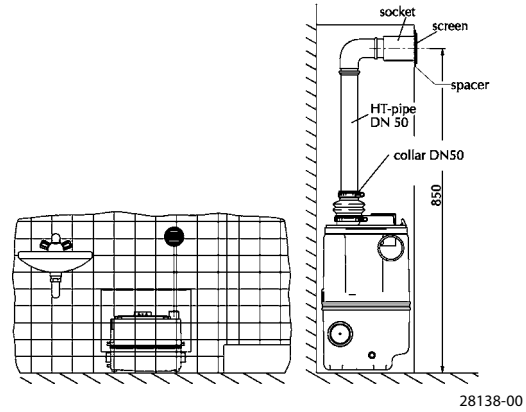
Mounting arrangement



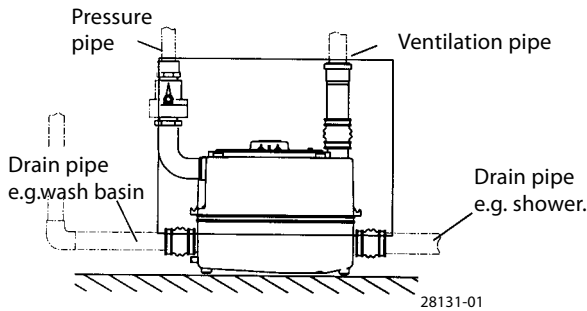
Mounting instructions



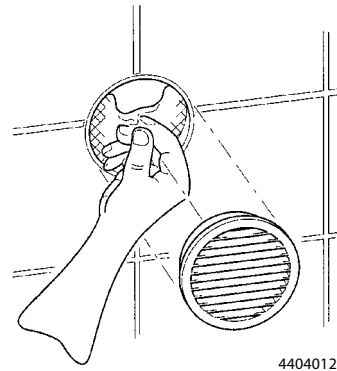
Hebefix V can be combined with all commercially available curtain wall installation systems. The spaces between the elements shown have to be observed. Rails mounted on the floor for the alignment of several elements can be laid under the tank to save space.



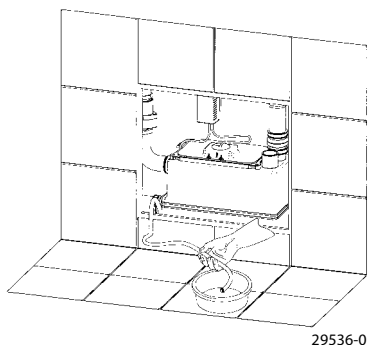
A ventilation system is imperative for operation. The type of installation shown prevents the development of moisture behind the curtain wall. All special parts required are contained in the scope of delivery.



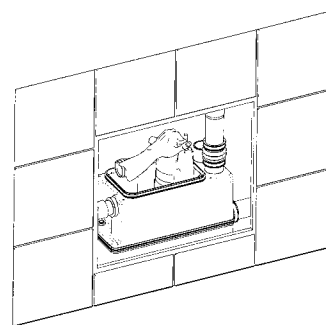
The system is placed in to the mounting compartment through the mounting opening and is connected elastically to the inlets by sleeves and clamps.



The snapped on ventilation grate only has to be removed to change the activated carbon filter in the system ventilation.



The drainage of the system is effected by a drainage hose, if and when required.



The pump can be removed when the tank cover has been removed.

