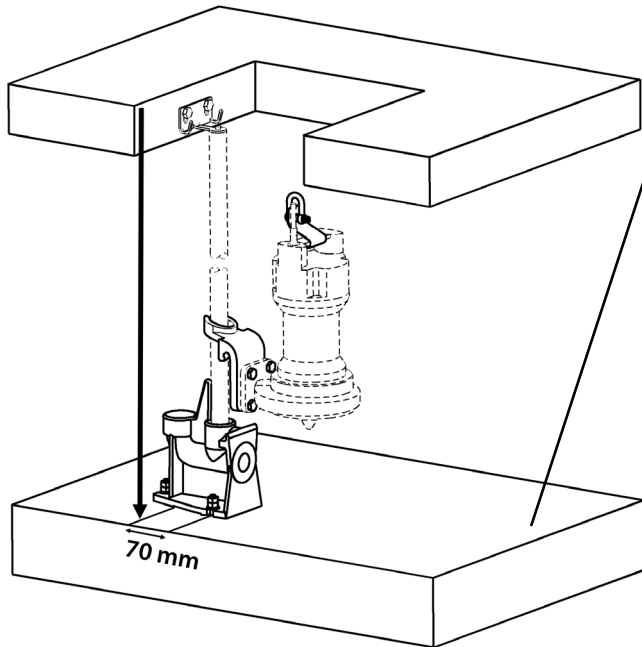
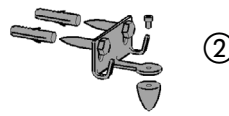
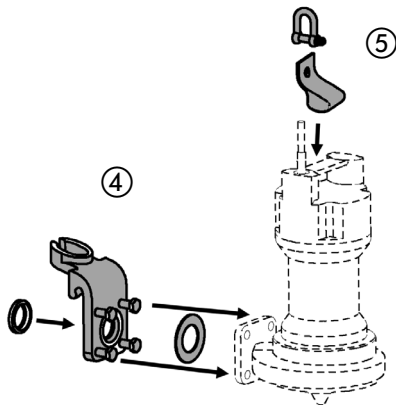


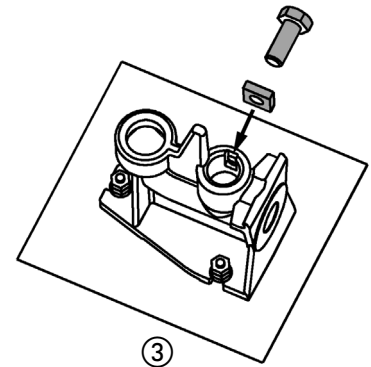
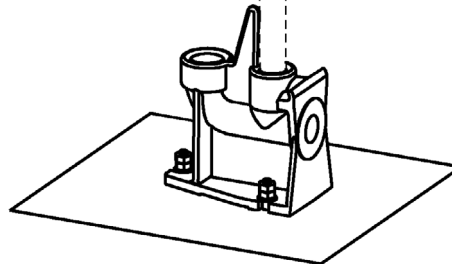
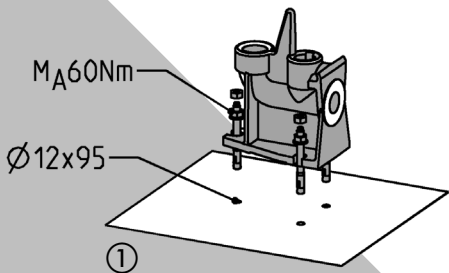
GR 35 -08 (JP29953) Mounting



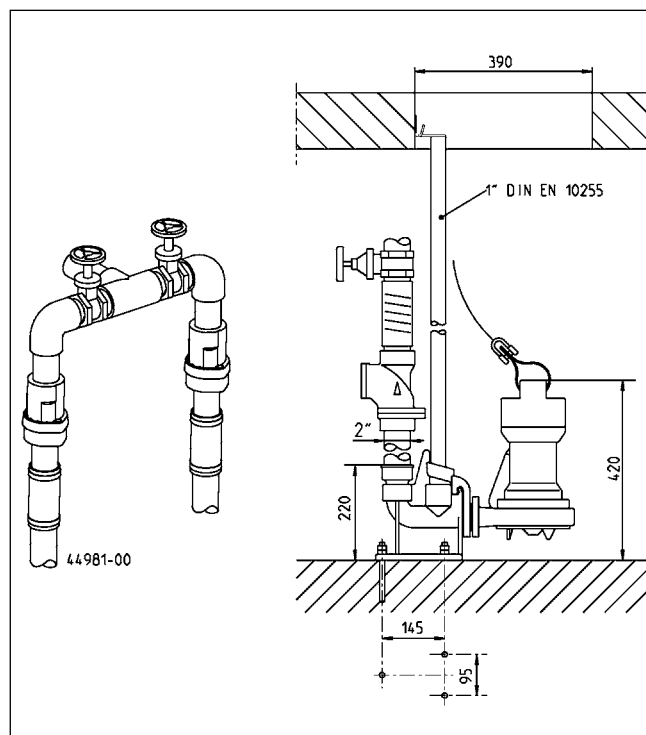
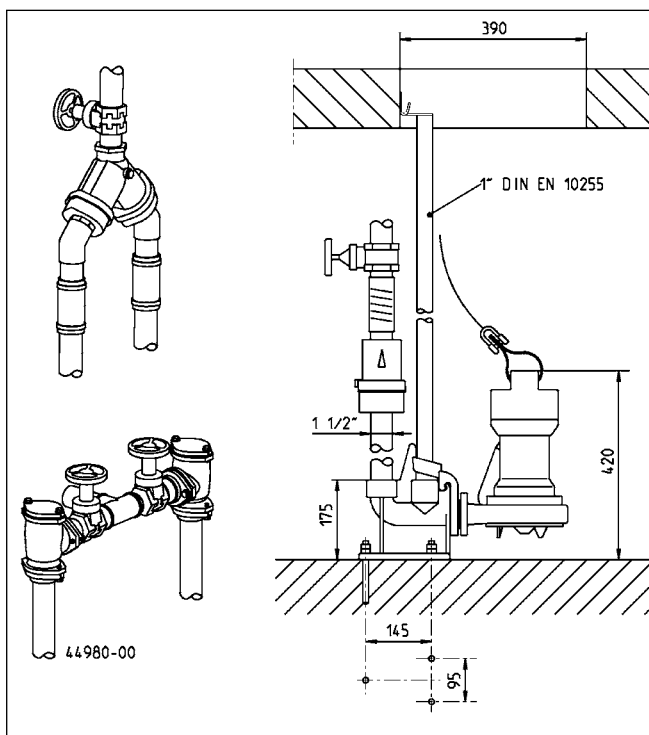
• **EN** - Standard concrete grade C 20/25 (EN 206-1), thickness > 140 mm, flatness tolerance max. 3 mm



①	JP45634
②	JP45118
③	JP45124
④	JP45126
⑤	JP45168
⑥	JP45134



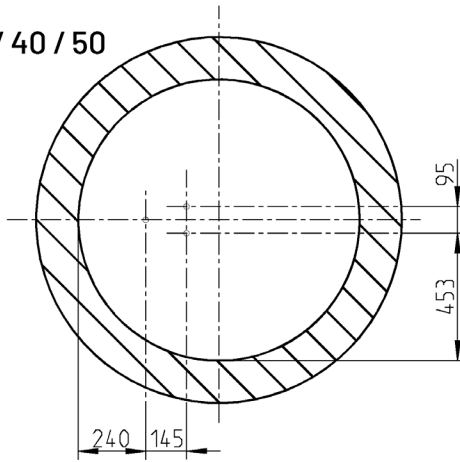
GR 35 -08 (JP29953)



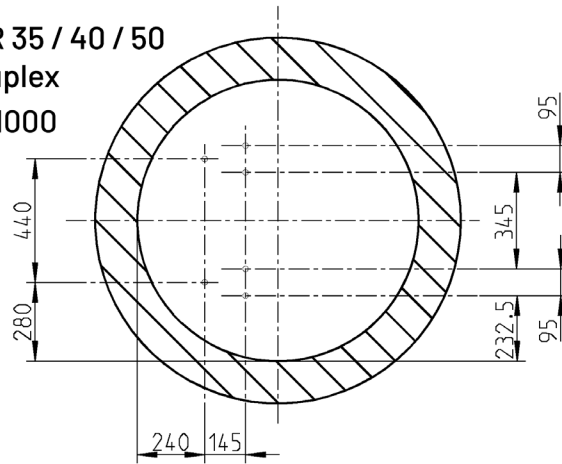
- **EN** - In case the pump snores during operation, a 6 mm hole should be drilled above the discharge into the pressure pipe to ensure the deaeration. When lowered the pump, a tiny jerk on the chain towards the guide tube improves the correct coupling.

GR 35 -08 (JP29953)

GR 35 / 40 / 50
Ø 1000

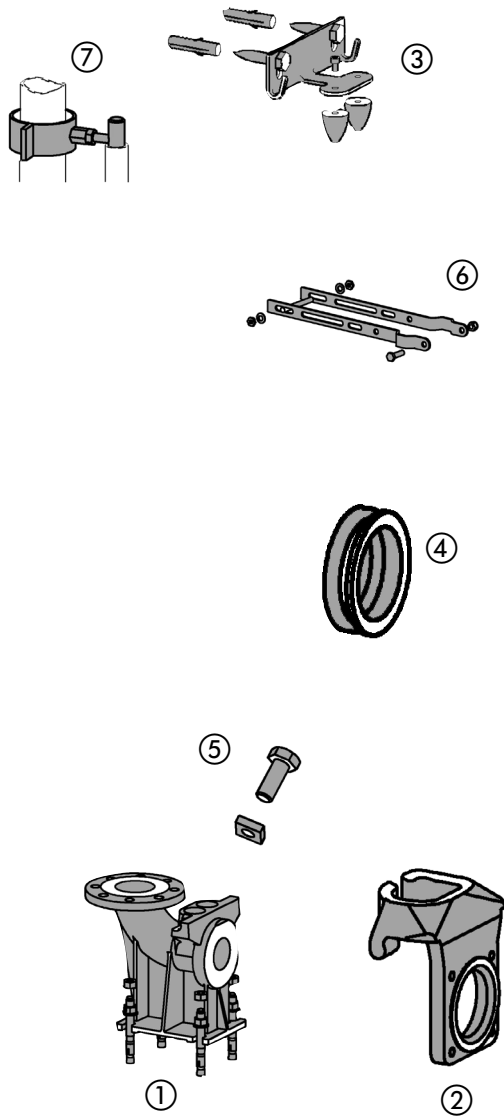


GR 35 / 40 / 50
Duplex
Ø 1000



49209

GR 35 -08 (JP29953)



35 -08	①	Fuß	Duckfoot bend	JP45634
	②	Klaue	Coupling claw	JP45126
	③	Befestigung	Retrainer	JP45118
	④	Dichtungen	Seals	JP45134
	⑤	Klemmung	Guide tube fixation	JP45124