

MULTICUT 08

SEWAGE PUMPS



- Cutting rotor with stirring effect
- Plug-in cable connection
- External adjustable cutting mechanism
- Controllable oil chamber
- Installed motor protection
- SiC mechanical seal independent of sense of rotation
- Moisture-sealed cable inlet
- Ex-version: Impeller and replaceable wear plate made from fibre-glass reinforced plastic

DESCRIPTION

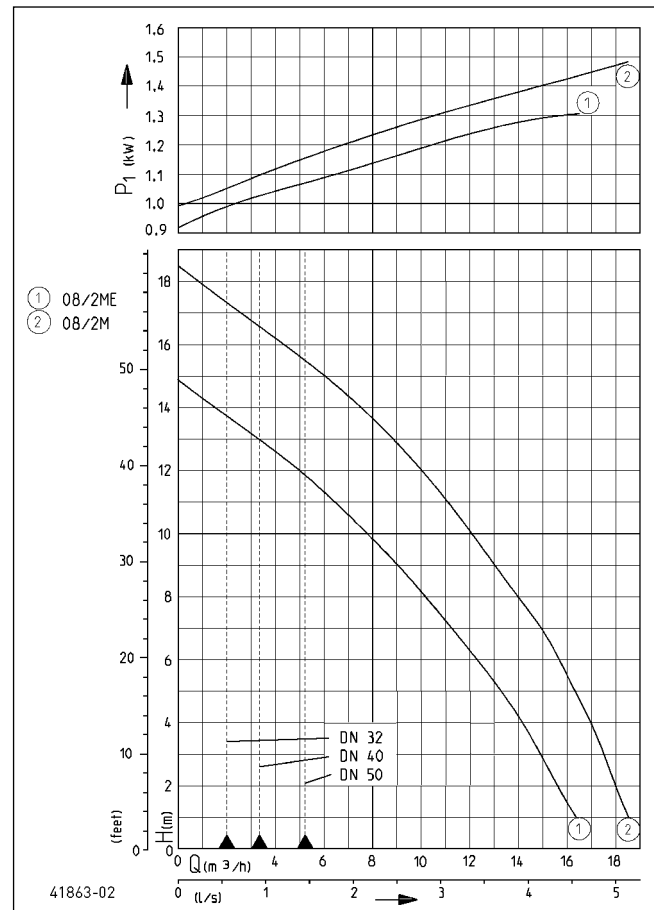
Centrifugal submersible sewage pumps fitted with the MultiCut cutting system are used as stationary appliances for backpressure protection of detached houses. They are suitable for pumping domestic wastewater with the usual additions (as specified in German standard DIN 1986, Part 3).

For pumping from ducts which are connected to the public sewer system, explosion-proof submersible pumps of have to be used. On account of the upstream cutting system, the pressurised line as from DN 32 - as from DN 80 minimum without cutting system - may be routed parallel to the terrain.

Operating conditions up to a temperature of the material to be transported of 40° celsius, submerged motor: continuous operation (S1), emerged motor: intermittent operation (S3) (e.g. 35% = 3.5 min. operation, 6.5 min. break).

The unique MultiCut cutting system ensures a maximum of operational safety at outstanding delivery characteristics. Fitted with a cutter plate made of hardened stainless steel and a three-bladed knife, it disintegrates coarse additions in the wastewater with more than 62,000 cutting processes per minute before they can get into the pump hydraulics. Solids which cannot be transported are rejected outside of the pump by the cutting rotor as the cutting system is located upstream from the pump hydraulics. Specifically arranged grooves on the cutter plate ensure additional safety as the cutting unit is permanently cleaned automatically during the delivery.

PERFORMANCE



Type	Delivery head H [m]	1	2	3	4	5	6	7	8	9	10	11	12	13	14	15	16
08/2 ME/MES	Flow rate Q [m³/h]	16.5	15.5	15.0	14.0	13.0	12.0	11.0	10.0	9.0	7.5	6.5	5.0	3.5	1.5		
08/2 M/MS		18.5	18.0	17.5	17.0	16.5	15.5	15.0	14.0	13.0	12.0	11.0	10.0	9.0	7.5	6.0	4.5

We reserve the right to change specifications without notice. Pump performance is subject to ISO 9906 tolerances

The minimum flow velocity in the pressure piping must be 0.7 m/s according to EN 12056. This data is represented in the performance curve as a limit of application.

MULTICUT 08

SEWAGE PUMPS

SCOPE OF SUPPLY

Pump ready for connection according to EN 12050 with 10 m cable and CEE plug 16 A (type M + MS) or schuko plug (type ME + MES)

For pumps with automatic switch control, the pump base are included in delivery. As Ex-pump with 10 m cable without plug. Complete motor protection only in connection with appropriate controls units (see accessories).

MECHANICAL DATA

Pump	Vertical single-stage	Run dry protection	Yes
Bearing	Ball bearings, grease-lubricated	Impeller	Vortex impeller, GFK
Seal on motor side	Duplex rotary shaft seals	Pump housing	Grey cast iron
Oil chamber	Yes	Submersible	Yes
Seal on medium side	SiC mechanical seal	Pressure outlet	DN 32

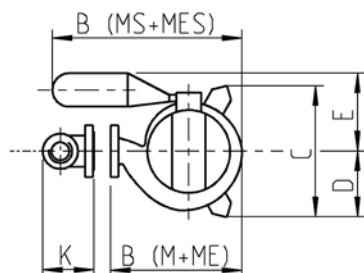
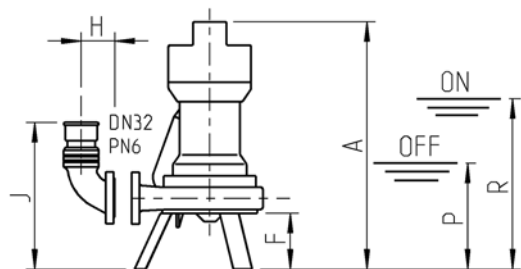
ELECTRICAL DATA

Power line	10m H07RN-F	Winding thermostat	Yes
Type of enclosure	IP 68		

MULTICUT 08

Type	Code No.	Voltage	Motor rating P1	P2	Current	Wires	Motor protection	Plug	S3	Motor housing	Weight
Without level control											
08/2 ME	JP09312	1/N/PE~230 V	1.37 kW	0.98 kW	6.0 A	3G1,0	In motor	Safety	10 %	Stainless steel	16.2 kg
08/2 M	JP09945	3/PE~400 V	1.65 kW	1.24 kW	2.8 A	4G1,0	In motor	CEE-16A	10 %	Stainless steel	16.5 kg
08/2 M, Ex	JP42768	3/PE~400 V	1.65 kW	1.24 kW	2.8 A	6G1,5	With control unit	Without	35 %	Grey cast iron	28.0 kg
With built-in level control											
08/2 MES	JP09313	1/N/PE~230 V	1.37 kW	0.98 kW	6.0 A	3G1,0	In motor	Safety	10 %	Stainless steel	16.6 kg
08/2 MS	JP09946	3/PE~400 V	1.65 kW	1.24 kW	2.8 A	4G1,0	In motor	CEE-16A	10 %	Stainless steel	17.2 kg

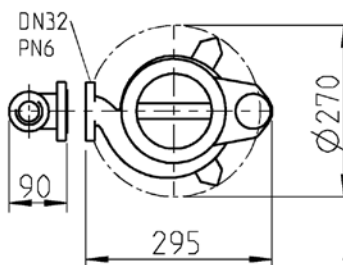
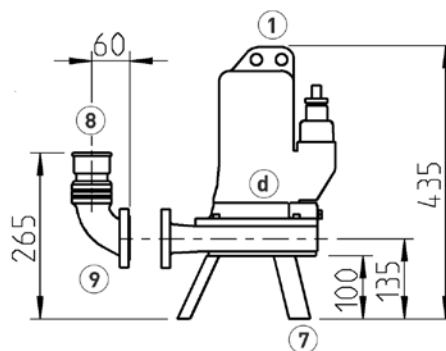
Dimensions 08/2 M (mm)



25981-09

Typ	A	B	C	D	E	F	G	H	J	K	P	R
08/2M +ME	445	235	230	-	-	100	128	60	265	90	-	-
08/2MS+MES	445	340	-	115	140	100	128	60	265	90	190	305

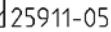
Dimensions 08/2 M, EX (mm)



43067-02

SEWAGE PUMPS

Example of pump base installation



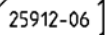
Example of pump base installation with ex-proof



Example of guide rail installation



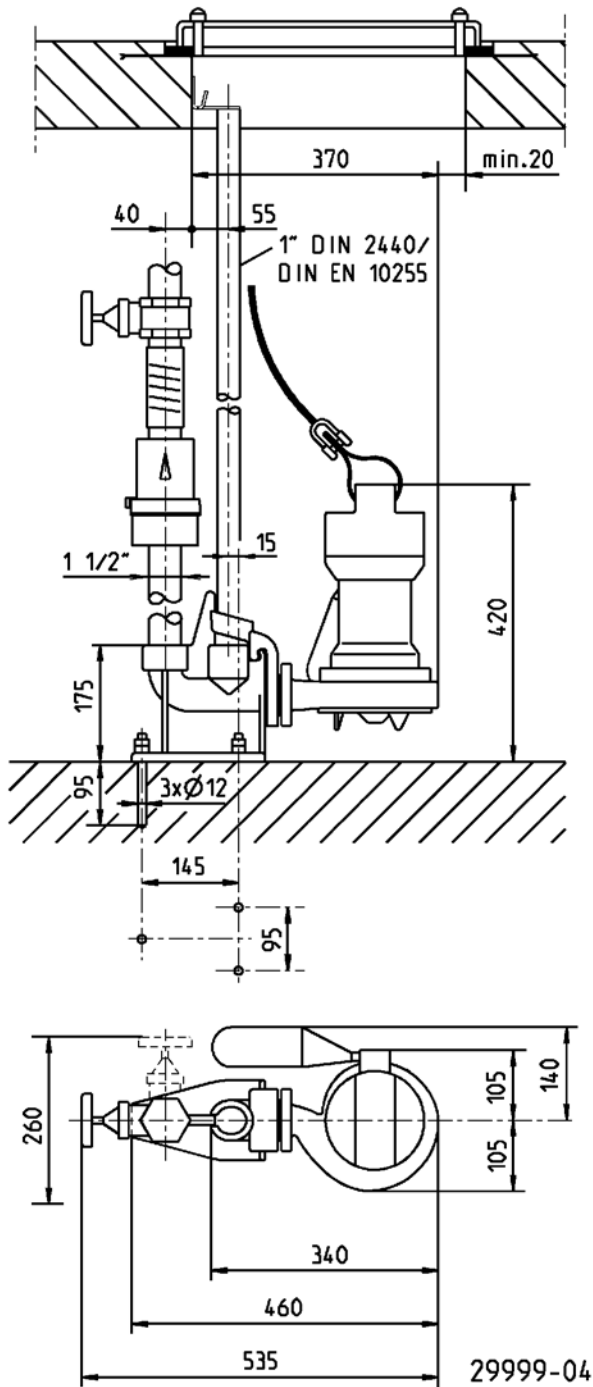
Example of guide rail installation with ex-proof



MULTICUT 08

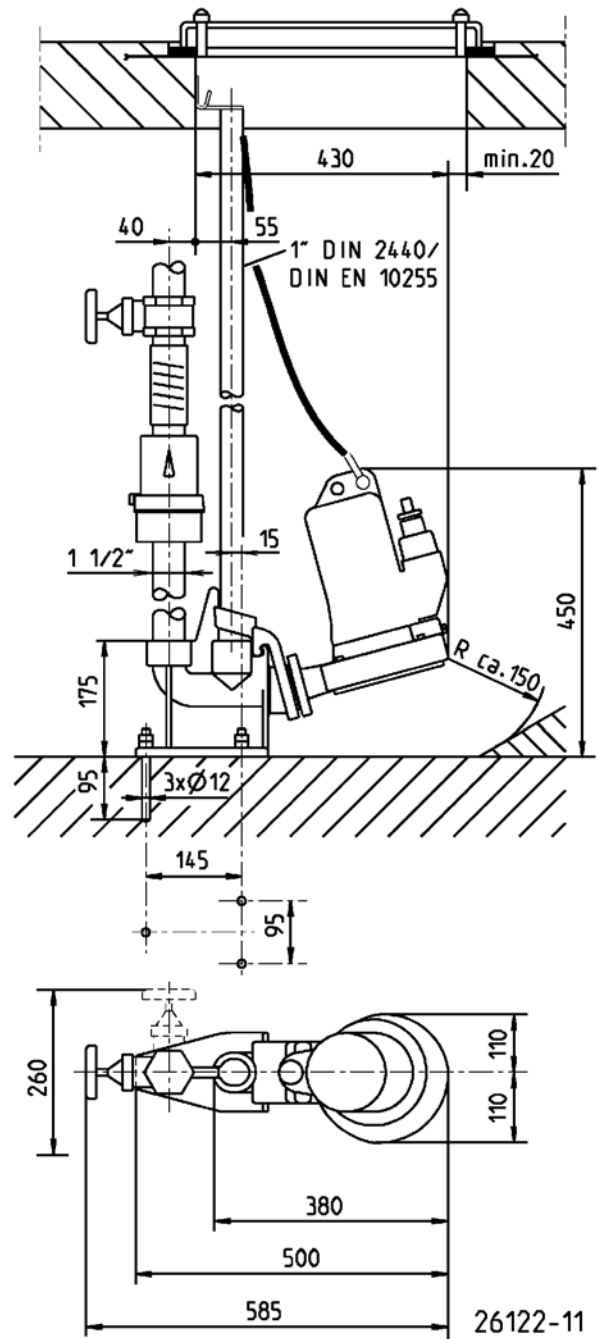
SEWAGE PUMPS

Example of guide rail installation



Single unit - min. sump (cm)
 without GR: 40x40
 with GR and swing-type check valve: 40x65
 with GR and ball-type check valve: 40x85

Example of guide rail installation with ex-proof



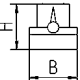
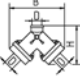
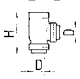
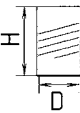





Duplex unit - min. sump (cm)
 without GR and swing-type check valve, check valve: 60x60
 without GR and elbow-ball check valve: 60x80
 with GR and duplex swing-type check valve: 60x60
 with GR and duplex swing-type check valve or -valve: 65x85

MULTICUT 08

SEWAGE PUMPS


MECHANICAL ACCESSORY

				Code No.
	① Chain	certified, 2.5 m, 320 kg, 5 rings (EN 818 mod.)		JP45901
		certified, 5.0 m, 320 kg, 8 rings (EN 818 mod.)		JP45902
		certified, 7.5 m, 320 kg, 11 rings (EN 818 mod.)		JP47365
		Shackle, certified, 630 kg, stainless steel		JP45904
		Pump hanging (08 Ex - 100...)		JP45925
	Webbing	with shackle		JP45168
	② Guide rail system			
	GR 35	1 1/2" female thread for MultiCut pumps		JP14094
	GR 35	1 1/2" female thread for MultiCut 08 without Ex-proof		JP29953
	Guide rail 1"	1500 mm		JP48937
	Guide rail 1"	2000 mm		JP48938
	Guide rail 1"	2500 mm		JP48939
  	③ Swing-type check valve			
	R40 EN 12050-4	1 1/2" (DN 40), PN 4	150x120 (HxB)	JP00317
	DR 40 EN 12050-4	1 1/2" (DN 40), PN 4	200x280 (HxB)	JP09155
	R50 EN 12050-4	2" (DN 50), PN 4	150x120 (HxB)	JP00326
	Ball-type check valve			
	KE40 EN 12050-4	1 1/2" (DN 40), PN 6	170x125 (HxB)	JP47974
	K50 EN 12050-4	2" (DN 50), PN 6	185x155 (HxB)	JP44782
	④ Stop valve	brass, 1 1/2" (DN 40), PN 16	125x60 (HxB)	JP44786
		stainless steel, 1 1/2" (DN 40), PN 16	125x80 (HxB)	JP48403
		brass, 2" (DN 50), PN 16	140x70 (HxB)	JP44787
	⑤ Elastic connection	1 1/2" (DN 40), PN 4	120x50 (HxD)	JP44777
		2" (DN 50), PN 4	150x63 (HxD)	JP44775
	⑥ Hose band clamp	1 1/2"		JP44763
		2"		JP44764
	⑦ Bases	(for 08/2 MS and MES in scope of supply		JP44759
	Retaining plate	in connection with startic-air level control		JP23100
	⑧ Reducing socket	1 1/4"-1 1/2"		JP44769
		1 1/4"-2"		JP44772
		1 1/2"-2" for guide rail system GR 35		JP44776
	⑨ Pipe connection	1 1/4" (female thread)		JP16870
	⑩ Flushing tube	Type I-M stainless steel with connection flange (not PKS-B 800)		JP40333
		Type 0 08 Ex, 20/2		JP45408

MULTICUT 08

SEWAGE PUMPS

ELECTRICAL ACCESSORY

		Code No.
	a Alarm unit Level alarm system with battery backup 320x240x150mm (WxDxH) High Level alarm unit. 182x180x111mm (HxWxD) Isolate appliance - in event of alarm no more water will be fed into the alarm system	PTS.SA1 PTS.HLA P734
	b Control for single units Control unit AD 00 E 230 V Control unit HIGHLOGO 1-00 E 230 V Control unit AD 25 ExM, TLS 400 V Control unit HIGHLOGO 1-25 LC 400 V Control for duplex units Control unit BD 00 E 230 V, for pumps U3-U6, US 62-105, UV 300, 08/2 ME + startic air level control Control unit HIGHLOGO 2-00 E 230 V Control unit BD 25 ExM, TLS 400 V Control unit HIGHLOGO 2-25 LC 400 V Level control + startic air module + startic air module + startic air level control	JP00289 JP47987 JP43159 JP47984 JP45735 JP17101 JP47996 JP43165 JP47993 JP26196 JP26196 JP17101
	c Rechargeable battery for mains independent alarm	JP44850
	d Seal leak detector DKG DKG Ex for explosion-proof pumps Smart Home FTJP radio transmitter	JP44900 JP00249 JP47209