

# U6

## DRAINAGE PUMPS

- Cooling jacket for motor housing
- Flushing device
- Low level pumping by detachable strainer base
- SiC mechanical seal independent of sense of rotation
- Run dry protection
- 10/20 mm free passage with EIP technology
- Replaceable moisture sealed cable inlet



### DESCRIPTION

The U6K range of pumps is suitable for stationary and portable use.

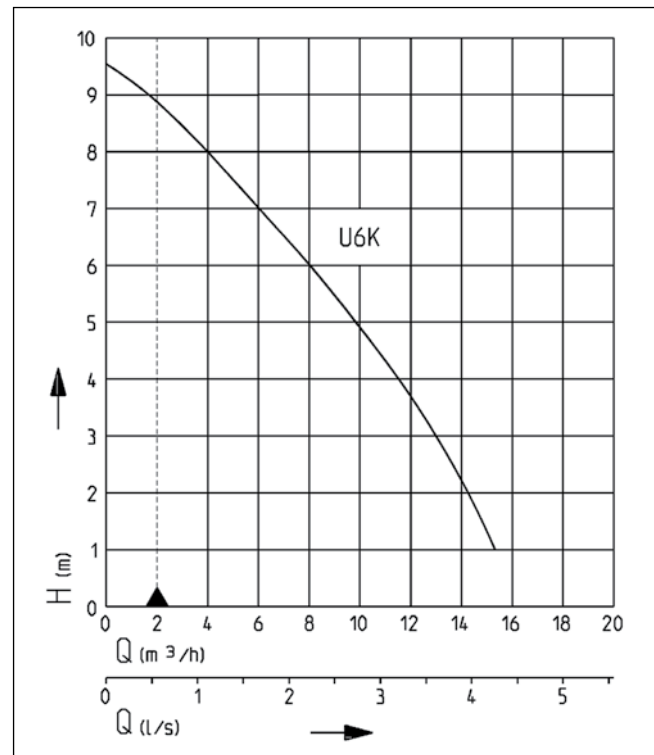
It can be used as a drainage pump for mildly contaminated waste and ground water, in sumps with rain water, drainage or seepage water, silage liquor and also liquid manure. The high quality mechanical seal also makes the pump suitable for extracting abrasive media.

In stationary use the U6K ES/DS removes the waste water from domestic appliances such as dishwashers and washing machines (also high temperature). The guide rail system GR 32 offers all the advantages of fast and easy maintenance. Our ready-to-install collecting tanks extend the options for installation and use.

For supporting sewage water with heavy pollution we recommend our US series. Especially for the transportable use, in building site areas for example, our building pumps UB should be used.

If centrifugal submersible pumps are used outdoors, only a pump with 10 m cable without extension cable may be used in accordance with VDE Regulation 0100.

### PERFORMANCE



Type	Delivery head H [m]	1	2	3	4	5	6	7	8	9
U6K E/D/ES/DS	Flow rate Q [m³/h]	15.5	14.5	13.0	11.5	9.5	8.0	6.0	4.0	1.5

We reserve the right to change specifications without notice. Pump performance is subject to ISO 9906 tolerances

The minimum flow velocity in the pressure piping must be 0.7 m/s according to EN 12056. This data is represented in the performance curve as a limit of application.



# U6

## DRAINAGE PUMPS

### SCOPE OF SUPPLY

Pump ready for connection acc. to EN 12050 with 90°, 1/4" female connection elbow, cable and plug, S model with automatic level float switch.

The pump is delivered fitted with a strainer base which can be swapped for any of the accompanying pedestals in cases where a 20 mm clear passage is required.

### MECHANICAL DATA

Pump	Vertical single-stage	Run dry protection	Yes
Free passage	20 mm	Shaft	Stainless steel
Bearing	Ball bearings, grease-lubricated	Impeller	Vortex impeller, GFK
Seal on motor side	Rotary shaft seal	Motor housing	Stainless steel
Oil chamber	Yes	Submersible	Yes
Seal on medium side	SiC mechanical seal	Pressure outlet	1 1/4"

### ELECTRICAL DATA

Motor rating P1	0.75 kW	Winding thermostat	Yes
Type of enclosure	IP 68	Motor protection	Integrated
Insulation class	B		

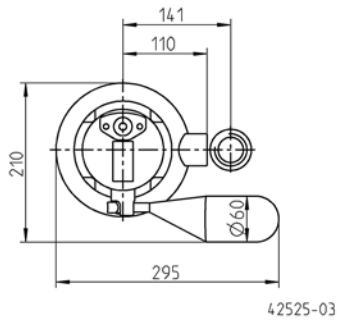
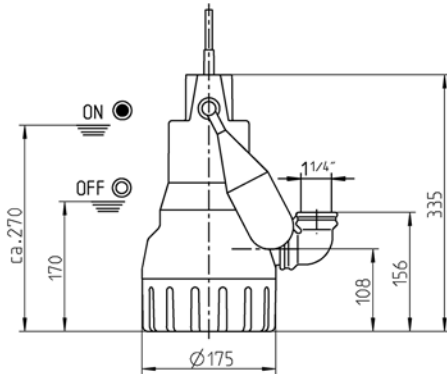
### U6

Type	Code No.	Voltage	Motor rating P2	Current	Power line	Wires	Plug	Weight
<b>Without level control</b>								
U6K E, 10 m cable	<b>JP00226</b>	1/N/PE~230 V	0.50 kW	3.3 A	10m H07RN-F	3G1,0	Safety	6.0 kg
U6K D, 10 m cable	<b>JP00228</b>	3/PE~400 V	0.55 kW	1.3 A	10m H07RN-F	4G1,0	CEE	6.5 kg
<b>With built-in level control</b>								
U6K ES, 4 m cable	<b>JP00227</b>	1/N/PE~230 V	0.50 kW	3.3 A	4m H07RN-F	3G1,0	Safety	5.5 kg
U6K DS, 4 m cable	<b>JP00229</b>	3/PE~400 V	0.55 kW	1.3 A	4m H07RN-F	4G1,0	CEE	5.9 kg
U6K ES, 10 m cable	<b>JP09260</b>	1/N/PE~230 V	0.50 kW	3.3 A	10m H07RN-F	3G1,0	Safety	6.2 kg
U6K DS, 10 m cable	<b>JP09261</b>	3/PE~400 V	0.55 kW	1.3 A	10m H07RN-F	4G1,0	CEE	6.8 kg

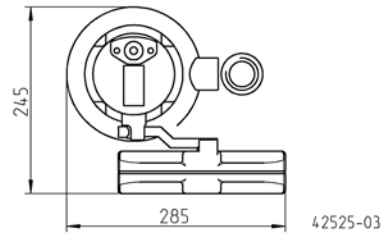
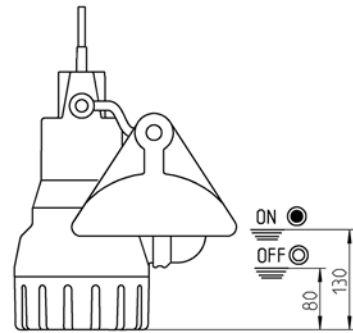
# U6

## DRAINAGE PUMPS

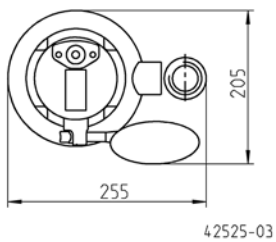
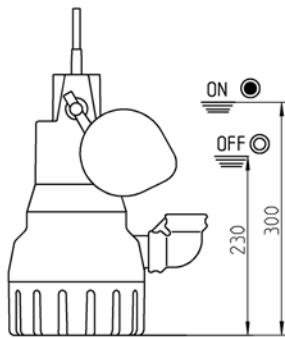
### Dimensions and switching points U6KS (mm)



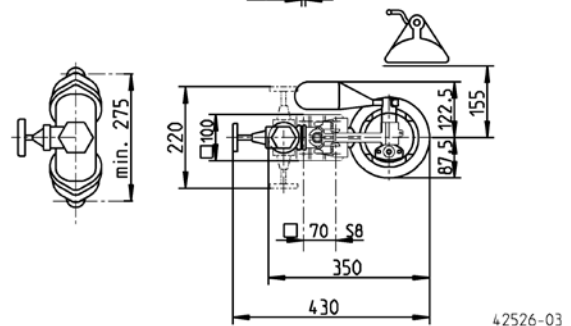
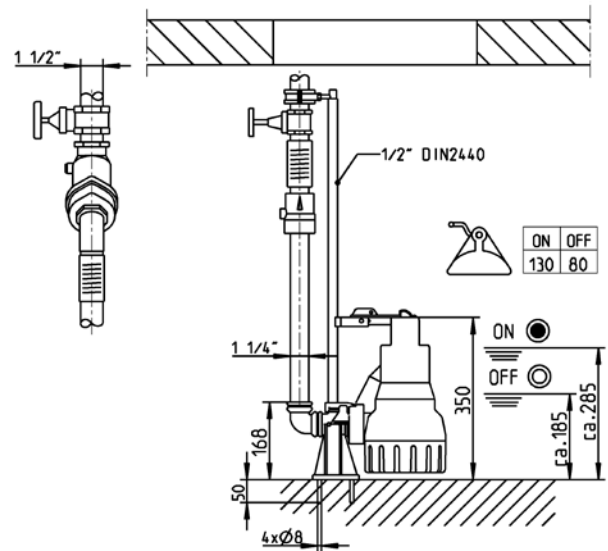
### Dimensions and switching points special float (mm)



### Dimensions and switching points special float (mm)



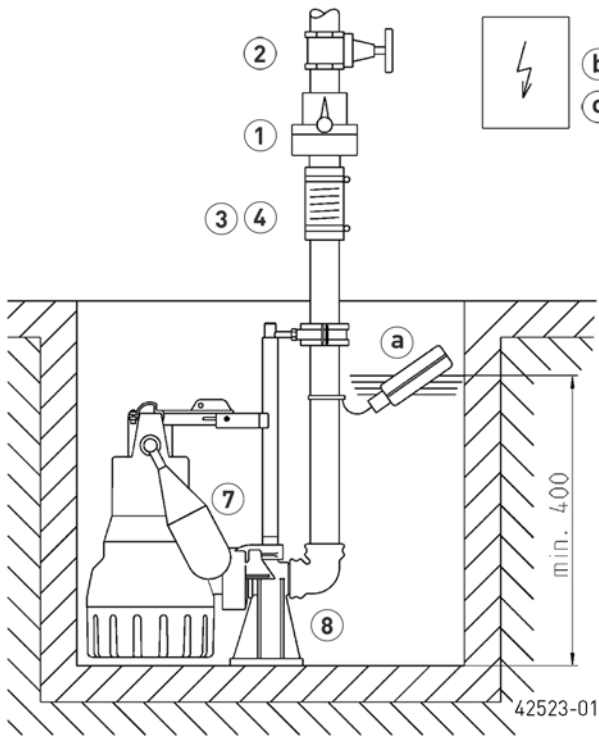
### Dimensions and switching points GR 32 (mm)



# U6

## DRAINAGE PUMPS

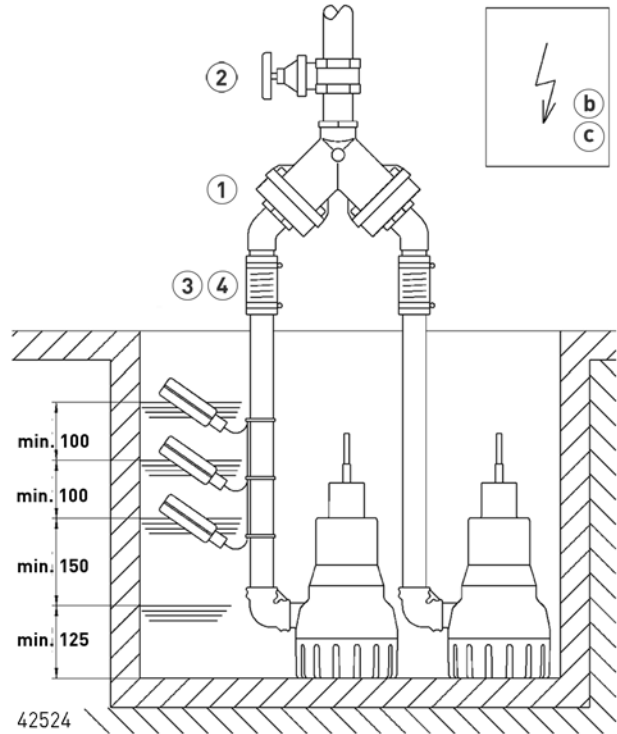
Example of single pump installation with GR



Single unit with GR: sump area min. 40x50 cm or Ø 50 cm  
 Single unit without GR: sump area min. 40x40 cm or Ø 40 cm  
 Duplex unit with GR: sump area min. 50x55 cm, Ø 65 cm  
 Duplex unit without GR: sump area min. 50x50, Ø 55 cm

In case of installation beneath the backpressure level the pressure tube must be taken in a

Example of duplex pump installation

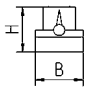
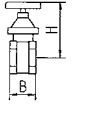
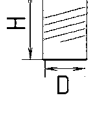




loop over the local backup level acc. to EN 12056. Besides, it must be secured with an EN 12050-4-proofed swing-type check valve. Additionally we recommend an alarm system.

In accordance with EN 12056-4 section 5.1, it has a built-in automatic spare pump or a double attachment included, which ensures that sewage drainage is not interrupted.

Suspend control unit in a dry room

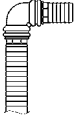






### MECHANICAL ACCESSORY

				Code No.
	<b>① Swing-type check valve</b>			
	R32	EN 12050-4	1/4" (DN 32), PN 4	90x90 (HxB) <b>JP09739</b>
	DR 40	EN 12050-4	1/2" (DN 40), PN 4	200x280 (HxB) <b>JP09155</b>
	<b>② Stop valve</b>			
			1/4" (DN 32), PN 16	110x60 (HxB) <b>JP44785</b>
			brass, 1/2" (DN 40), PN 16	125x60 (HxB) <b>JP44786</b>
	<b>③ Elastic connection</b>			
			1/4" (DN 32), PN 3	100x42 (HxD) <b>JP44773</b>
	<b>④ Hose band clamp</b>			
			1/4"	<b>JP44765</b>
	<b>⑤ Hose coupling</b>			
	Hose coupling		1/4" (DN 32) brass, for transportable use	<b>JP00327</b>
	Coupling Storz C		1 1/4" male thread	<b>JP44780</b>
	Coupling wrench			<b>JP25708</b>
	House connection		1/4" - 38/32/25	<b>JP44209</b>

# U6

## DRAINAGE PUMPS


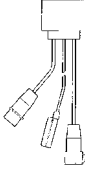

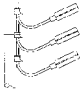
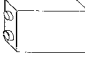
### MECHANICAL ACCESSORY

			Code No.
	<b>6</b> Hose set	1 1/4" (DN32), 15 m PVC hose c/w elbow	JP43550
	<b>7</b> Special float	for lower switching points (U5 and U6)	JP44207
		for narrow chambers (mind. 30x30 od Ø30 cm)	JP40856
	Float fixation	for continuous pump operation	JP42175
	<b>8</b> Guide rail system	GR 32	JP44000
	Support for guide rail extension	ex 2 m sump depth, per m 1 piece	JP28314
	<b>9</b> Connection kit	DN 32, with telescopable pressure pipe 30-90 cm	JP44609

# U6

## DRAINAGE PUMPS

### ELECTRICAL ACCESSORY

			Code No.
	<b>a Alarm unit</b> PTS.SA1	Level alarm system with battery backup 320x240x150mm (WxDxH)	<b>PTS.SA1</b>
	PTS.HLA	High Level alarm unit. 182x180x111mm (HxWxD)	<b>PTS.HLA</b>
	Power Isolation Alarm	Isolate appliance - in event of alarm no more water will be fed into the alarm system	<b>P734</b>
	<b>b Control for single units</b>		
	Control unit NE 1	230 V, subm. ball contact switch 3.0 m	<b>JP16710</b>
	Control unit NE 1A	230 V, subm. ball contact switch 3.0 m, alarm	<b>JP16714</b>
	Control unit NE 2	230 V, subm. ball contact switch 9.5 m	<b>JP16711</b>
	Control unit NE 2A	230 V, subm. ball contact switch 9.5 m, alarm	<b>JP16715</b>
	<b>Control for duplex units</b>		
	Control unit BD 00 E	230 V, for pumps U3-U6, US 62-105, UV 300, 08/2 ME	<b>JP45735</b>
	Control unit HIGHLOGO 2-00 E	230 V	<b>JP47996</b>
	<b>Level control</b>		
	Subm. switch pack B	3 subm. ball contact switch with 9.5 m and fixing devices	<b>JP16725</b>
	Subm. switch pack BmG	3 subm. ball contact switch with 9.5 m and counterweight to stabilize the subm. ball contact switch	<b>JP16726</b>
	Weight		<b>JP44803</b>
	<b>c Rechargeable battery</b>	for mains independent alarm	<b>JP44850</b>
			<b>JP47209</b>