



**PUMP TECHNICAL
SERVICES LIMITED**

THE
SUBMERSIBLE
PUMP
SPECIALISTS



WCFIX 260

EN Instruction Manual



You have purchased a product made by Pentair Jung Pumpen and with it, therefore, also excellent quality and service. Secure this service by carrying out the installation works in accordance with the instructions, so that our product can perform its task to your complete satisfaction. Please remember that damage caused by incorrect installation or handling will adversely affect the guarantee.

This appliance can be used by children aged 8 years or over and by persons with limited physical, sensory or intellectual capabilities, or with limited experience and knowledge, provided that they are supervised or have been instructed in the safe use of the appliance and are aware of the dangers involved. Children must not be allowed to play with the appliance. Cleaning and user maintenance must not be carried out by children unless they are supervised.

Damage prevention in case of failure

Like any other electrical device, this product may fail due to a lack of mains voltage or a technical defect.

If damage (including consequential damage) can occur as a result of product failure, the following precautions can be taken at your discretion:

- Installation of a water level dependent (under circumstances, mains-independent) alarm system, so that the alarm can be heard before damage occurs.
- Inspection of the collecting tank/chamber for tightness up to the top edge before – or at the latest, during – installation or operation of the product.
- Installation of backflow protection for drainage units that can be damaged by wastewater leakage upon product failure.
- Installation of a further product that can compensate in case of failure of the other product (e.g. duplex unit).
- Installation of an emergency power generator.

As these precautions serve to prevent or minimise consequential damage upon product failure, they are to be strictly observed as the manufacturer's guideline – in line with the standard DIN EN specifications as state of the art – when using the product (Higher Regional Court Frankfurt/Main, Ref.: 2 U 205/11, 06/15/2012).

SAFETY INSTRUCTIONS

This instruction manual contains essential information that must be observed during installation, operation and servicing. It is therefore important that the installer and the responsible technician/operator read this instruction manual before the equipment is installed and put into operation. The manual must always be available at the location where the pump or the plant is installed.

Failure to observe the safety instructions can lead to the loss of all indemnity.

In this instruction manual, safety information is distinctly labelled with particular symbols. Disregarding this information can be dangerous.



General danger to people



Warning of electrical voltage

NOTICE! Danger to equipment and operation

Qualification and training of personnel

All personnel involved with the operation, servicing, inspection and installation of the equipment must be suitably qualified for this work and must have studied the instruction manual in depth to ensure that they are sufficiently conversant with its contents. The supervision, competence and areas of responsibility of the personnel must be precisely regulated by the operator. If the personnel do not have the necessary skills, they must be instructed and trained accordingly.

Safety-conscious working

The safety instructions in this instruction manual, the existing national regulations regarding accident prevention, and any internal working, operating and safety regulations must be adhered to.

Safety instructions for the operator/user

All legal regulations, local directives and safety regulations must be adhered to.

The possibility of danger due to electrical energy must be prevented.

Leakages of dangerous (e.g. explosive, toxic, hot) substances must be discharged such that no danger to people or the environment occurs. Legal regulations must be observed.

Safety instructions for installation, inspection and maintenance works

As a basic principle, works may only be carried out to the equipment when it is shut down. Pumps or plant that convey harmful substances must be decontaminated.

All safety and protection components must be re-fitted and/or made operational immediately after the works have been completed. Their effectiveness must be checked before restarting, taking into account the current regulations and stipulations.

Unauthorised modifications, manufacture of spare parts

The equipment may only be modified or altered in agreement with the manufacturer. The use of original spare parts and accessories approved by the manufacturer is important for safety reasons. The use of other parts can result in liability for consequential damage being rescinded.

Unauthorised operating methods

The operational safety of the supplied equipment is only guaranteed if the equipment is used for its intended purpose. The limiting values given in the "Technical Data" section may not be exceeded under any circumstances.

Instructions regarding accident prevention

Before commencing servicing or maintenance works, cordon off the working area and check that the lifting gear is in perfect condition.

Never work alone. Always wear a hard hat, safety glasses and safety shoes and, if necessary, a suitable safety belt.

Before carrying out welding works or using electrical devices, check to ensure there is no danger of explosion.

People working in wastewater systems must be vaccinated against the pathogens that may be found there. For the sake of your health, be sure to pay meticulous attention to cleanliness wherever you are working.

Make sure that there are no toxic gases in the working area.

Observe the health and safety at work regulations and make sure that a first-aid kit is to hand.

In some cases, the pump and the pumping medium may be hot and could cause burns.

For installations in areas subject to explosion hazards, special regulations apply!

APPLICATION

The WCfix 260 is a sewage disposal unit for a toilet above and below the backpressure level.

- There should only be a few users and there must be an additional toilet available above the local back-flow level.
- Only domestic wastewater without hazardous substances according to EN 12056 can be discharged.
- The unit is operated in combination with a cistern with a capacity of at least 6 litres. If the amount of flush water is less than 6 litres, for example due to water-saving buttons, then we cannot guarantee that the unit will work properly.

A washbasin, a shower and a bidet can also be connected. These additional facilities must be installed in the same room. The standard EN 12050-3 does not permit any other additional facilities, such as a washing machine, sink, dishwasher or bath, to be installed.

If installed in compliance with the regulations and used for the intended purpose, then this appliance meets the protective requirements of the EMC directive 2014/30/EU and is suitable for domestic use and connection to a mains power supply.

It can be used wherever the installation of a toilet is required as part of renovation or conversion work. The faecal matter and toilet paper are conveyed by the pump to existing collecting tanks.

NOTICE! However, sanitary articles, paper towels, moist toilet paper, leftovers, solvents, chemicals, grease etc. must not be disposed of in the toilet.

The flow rate in the pressure pipe must be at least 0.7 m/s.

The limitation of use due to the maximum delivery head is 0.4 bar (4.0 m of water).

The resulting geod. delivery head and range, depending upon the pipe diameter, is shown in figure 2. The permissible medium temperature is 35° C, the operating mode is intermittent duty S3, 30% (3 min. operation - 7 min. interval)

NOTICE! When the unit is installed in bathrooms and shower rooms VDE regulations 0100 part 701 must be complied with!

The WCfix 260 is frost-resistant to -20°C when stored in dry conditions. Once installed, however, the residual water in the toilet must not be allowed to freeze.

Scope of supply

1 complete WCfix 260, 1 non-return valve 1¼", 1 discharge elbow d=32, 2 connection sleeves d=40, 1 "Prohibited substances" sticker, 2 wood screw 4x40, 2 rawlplug S6, 1 active carbon filter, 2 pipe clips, drill template, this manual.

been installed properly in accordance with the regulations and are protected with at least 10 A (slow) and FI-safety switches (30mA)

NOTICE! Only qualified electricians may carry out electrical works to the WCFIX 260.

NOTICE! Never put the mains plug in water! If water gets into the plug, this can cause malfunctions and damage.

The relevant standards (such as EN standards), country-specific regulations (such as VDE in Germany), and the regulations of the local power supply companies must be observed.

Observe the operating voltage (see the type plate)!

No additional motor protection is required, since the system has an integrated coil thermostat.

Unacceptably high temperatures and long periods of continuous operation cause the thermostat to shut down the motor.

WARNING!

After the thermostat has switched off the system, pull out the mains plug before remedying the fault, since the device can switch itself on again automatically if the power is still connected.

General explication

The WC-fix 260 operates automatically depending on the water level in the tank.

INSTALLATION

The WCfix can be fixed directly at commercial toilets (DIN 1387 or 1388) with a horizontal discharge pipe. The height of the installation level up to the middle of the connection piece must be 180 mm.

NOTICE! A connection tube between the WCfix and the toilet can cause malfunctions.

This sort of installation is not in accordance with the rules of the German institute for construction engineering.

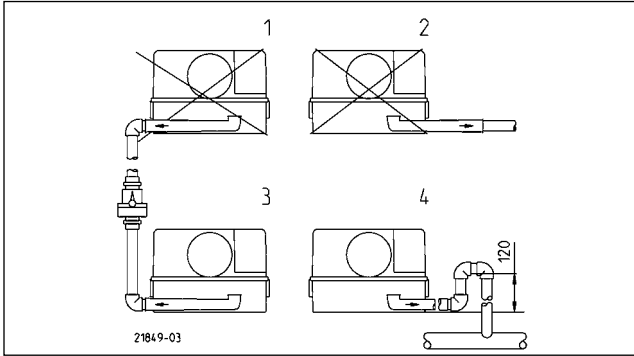
The required space behind the toilet is the same as the one of a commercial flushing box with a content of 9l. The distance between the end of the connecting branch of the toilet and the wall must have a minimum of 275 mm, to allow a removing of the unit without demounting the basin. The enclosed flap-trap must be installed into the pressure tube (preferred installation: vertical, connection 1¼ inch). We recommend installing a shut-off valve after the check valve in the pressure pipe. This allows the check valve to be serviced easily. If the pressure pipe is installed entirely horizontally to the collecting or main pipe, a stagnation loop must be installed in the pressure pipe. If the pressure pipe is installed with the pressure pipe transition point located below the system installation level, then the pressure pipe must be enlarged after its highest point by a wider-dimensioned pipe to prevent any suction lifting effect from being created which would cause the tank to empty automatically.

ELECTRICAL CONNECTION



WARNING!

The WCFIX 260 must only be connected to sockets that have



NOTICE! Do not connect more additional objects than a wash-basin, a bidet and a shower.

Please note that the invert of these additional connections must be located at least 180 mm above the installation level to prevent the water sealant in the odour trap from mixing with the wastewater from the system. In addition, the stagnation loop needs to be installed as closely as possible to the WCfix. This will reduce sewage backpressure and air exchange in the water pipe leading to the shower.

For additional connections there are 2 separate inlets, above the bottom, at the rear side of the tank for tubes with an outside diameter of 40 mm.

In order to decrease bad smells there is an activated carbon filter which can be installed if required.

Before installation the foil must be removed.

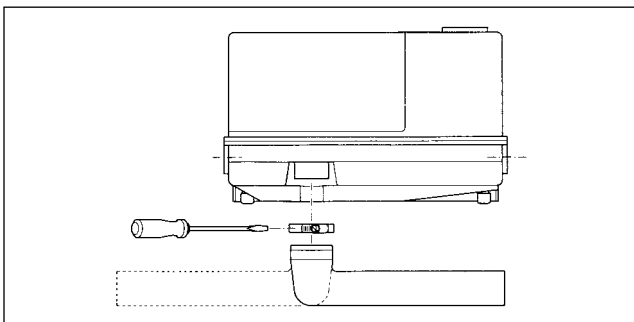
An alternative solution is the connection of a ventilation (d=40 mm) to the roof, that prevents effectively an annoyance caused by bad smell.

NOTICE! The place of installation must be safe from flooding and should be well ventilated.

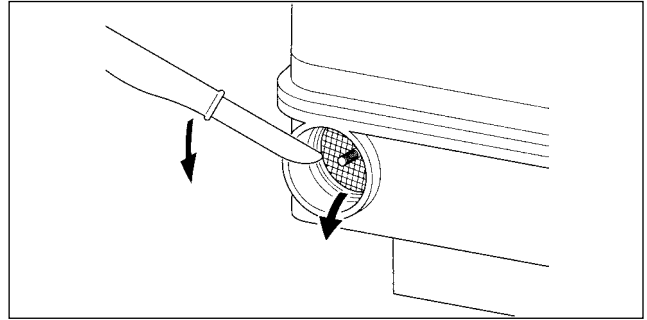
Accessories to fix the unit on the floor against torsion and floating are enclosed.

MOUNTING

Before installation make sure that all tubes have the required outer diameter, especially the pressure tube.



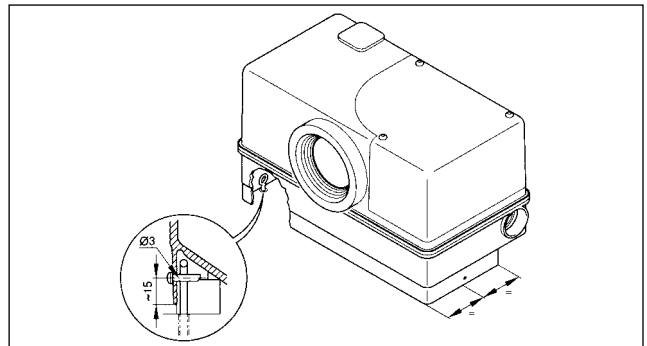
Push the pressure elbow onto the outlet of the unit, choose the direction and fix it with the strap. See to it that the pressure elbow is completely pushed onto the outlet, to secure a safe installation of the strap.



To connect a wash-basin, a shower and / or a bidet, remove the plug from the inlet. Pay Notice to the installation notes concerning heights, falls and arrangement.

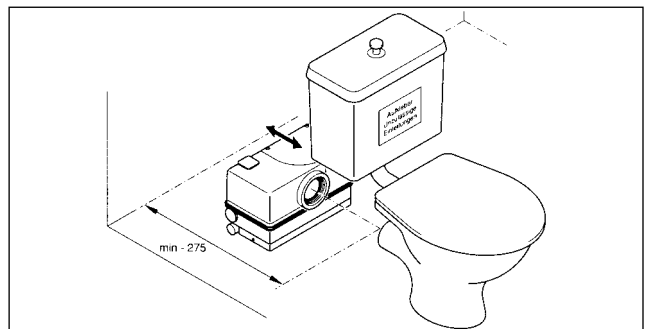
After removing the plug, open the inlet sleeve at the marked point with a knife or a screwdriver.

NOTICE! The cut out seal must not be left in the container.



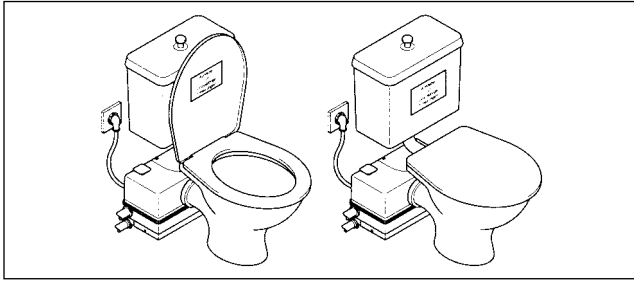
The WCfix 260 can be secured against torsion and floating by using eyelet bolts, dowels and sheet metal screws which are enclosed.

At first mark the dowel holes on the floor with the enclosed drill template. Therefore straighten the template at the wall behind the toilet, check the outlet of the toilet and then draw on the bore holes on the floor. After that straighten the WCfix 260 on the template, fold up the side walls and draw on the bore holes (d=3) on the lower edge of the casing. After drilling the holes into the floor and the container, mount the eyelet bolts.

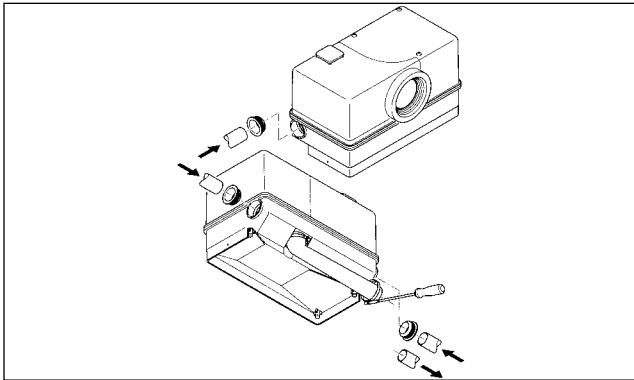


Put the pre-assembled WCfix 260 behind the toilet. Push the unit with the rubber collar DN 100 up to the stop (in the inlet of the tank) onto the outlet of the toilet. If necessary, moisten the rubber collar with soap water and level out the heights with the rubber bases of the unit with washers (not enclosed). Screw the sheet metal screws into the middle of the eyelet plugs.

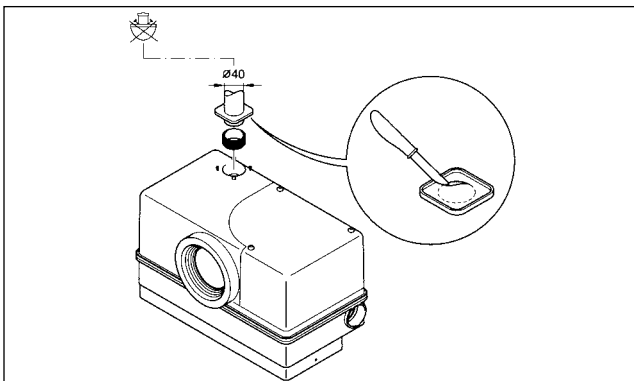
NOTICE! The fit of the rubber collar must be perfect.



Fix the enclosed sticker with „Operating Instructions“ in a visible place. The disposal of things like hygienic articles, fibre substances, food waste, solvents, chemicals, etc. can lead to malfunctions and will affect the guarantee.



Put the plug-in seal(s) flush into the inlet sleeve(s). Then put the tube(s) up to the stop into the plug-in seal of the inlet sleeve. Push the pressure elbow with a strap over the pressure line and fix it.



An uptake to the roof must be installed risingly. The connection of the line is the same as the one of the additional connections. The connection sleeve is made for a tube $d = 40$ mm.

Remove the cap of the casing. If an activated carbon filter is already installed, it must be removed. Put the plug-in seal, into the connection sleeve until the collar of the seal is on the surface of the casing. If both enclosed plug-in seals are already used, please order an extra seal (JP45098).

The cap has a prepared cut out at the inner side, to cover the hole if a ventilation tube will be installed. Remove the cut out with a knife or a screwdriver and burr the separating line.

Push the cap over the ventilation pipe, put the pipe into the seal and press on the cap.

Practical hints

After using commercial cleaning material, flush several times to ensure that no reminders rest in the unit. Holding devices of permanent cleaning materials must be fixed especially save to prevent them from being flushed into the unit.

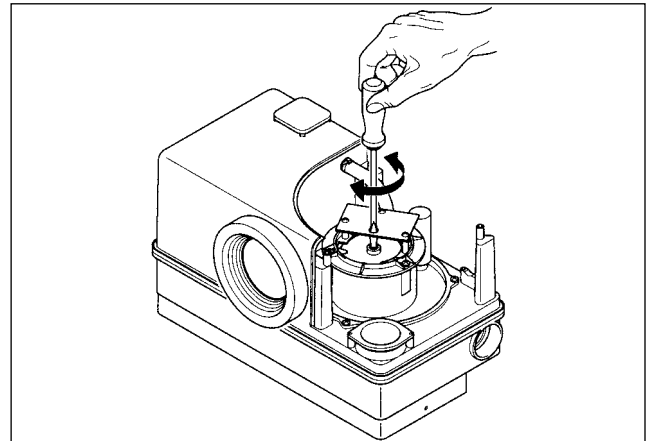
CLEANING / MAINTENANCE

NOTICE! Works on the unit should only be done by qualified electricians.

WARNING!

Pull main plug before any work or repairs on the unit and take steps to ensure that it cannot be emergized again.

1. Disassemble the cover. Unscrew three cap screws.

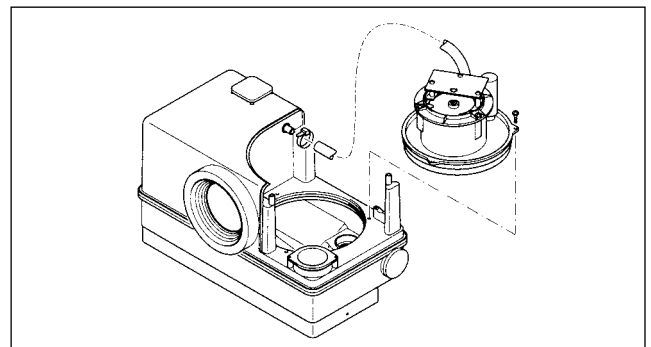


2. In case of any blockages of the unit: Insert a screwdriver through the hole in the Printed Circuit Board into the slotted pump shaft and turn it until the shaft is moving freely. Re-fit the cover and check the pump by a short test run.

After that, control the pump by plugging in the mains plug momentarily.

3. If the unit will not run satisfactorily after the procedure of point 2., the pump with motor must be disassembled.

- Before disassembling the complete pump and motor unit, remove the water from the toilet bowl, detach the pressure elbow connection from the pipework and drain the water off into a flat storage basin, or pump out the water with a drilling machine ($n > 2000$ min, right handed rotation) and a screwdriver bit.



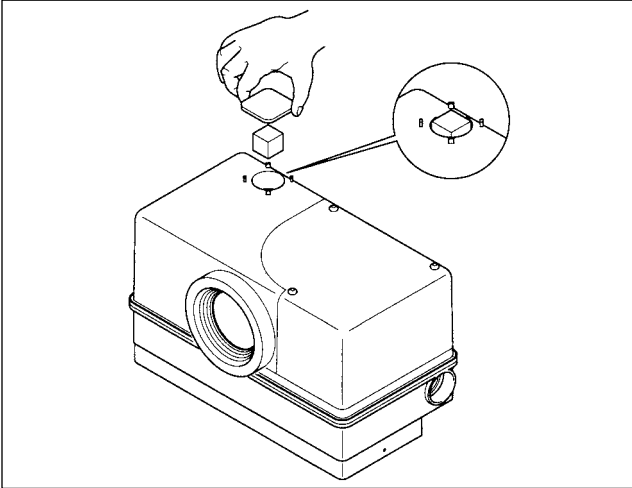
- If necessary, remove the water and any blockages from the tank and the pump etc. and clean all parts.
- Check and clean also the vent pipe and carbon filter plate which must be replaced, if necessary.
- Before re-assembling, the O-rings and seal sleeves must be cleaned and greased.

Installation / change of the activated carbon filter

To prevent an annoyance caused by bad smell we recommend the installation of the activated carbon filter (enclosure).

Therefore the cap of the tank ventilation must be removed. Push the unwrapped activated carbon filter into the cylindric opening.

The filter has a little interfering for a save seat. The edges of the filter will sheare off slightly. After that, re-fit the cover. The filter should be changed after malfunctions with overflowing of water through the ventilation valve, in case of bad smells, it should be changed once a year.



EU-Declaratie de conformitate
EU-Vyhlašení o zhode
EU-Föresäkran om överensstämmelse

EU-Declaration de Conformité
EU-Megfelelőési nyilatkozat
EU-Dichiarazione di conformità
EU-Conformiteitsverklaring
EU-Deklaracja zgodności

EU-Konformitätserklärung
EU-Próhlašeni o shode
EU-Overensstemmelseserklæring
EU-Declaration of Conformity
EU-Vastustennukausuuskvutus

RO - Directivă - Norme coroborate
SK - Smernice - Harmonizované normy
SV - Direktiv - Harmoniserade normer

FR - Directives - Normes harmonisées
HU - Irányelve - Harmonizált szabványok
IT - Direttive - Norme armonizzate
NL - Richtlijnen - Geharmoniseerde normen
PL - Dyrektywy - Normy zharmonizowane

DE - Richtlinien - Harmonisierte Normen
CS - Směrnice - Harmonizované normy
DA - Direktiv - Harmoniseret standard
EN - Directives - Harmonised standards
FI - Direktiiv - Yhdenmukaiset standardit

•2006/42/EG (MD) EN 808:1998/AC:2010, EN ISO 12100:2010, EN 60335-1:2012/A11:2014
•2011/65/EU (RoHS) EN 55014-1:2006/A2:2011, EN 55014-2:1997/A2:2008, EN 61000-3-2:2014, EN 61000-3-3:2013
•2014/30/EU (EMC)

JUNG PUMPEN GmbH - Industriestr. 4-6 - 33803 Steinhagen - Germany - www.jung-pumpen.de

DE - Wir erklären in alleiniger Verantwortung, dass das Produkt den aufgeführten Richtlinien entspricht.
CS - Prohlašujeme na svou výlučnou odpovědnost, že výrobek odpovídá jmenovaným směrnicím.
DA - Vi erklærer under ansvar at produktet i overensstemmelse med de nævnte direktiver.
EN - We hereby declare, under our sole responsibility, that the product is in accordance with the specified Directives.
FI - Me vakuutamme omalla vastuullamme, että tuote täyttää ohjeita.
FR - Nous déclarons sous notre propre responsabilité que le produit répond aux directives.
HU - Kizárólagos felelősségünk tudatában kijelentjük, hogy ez a termék megfelel az Európai Uniói feltüntetett irányelveinek.
IT - Noi dichiariamo sotto la nostra esclusiva responsabilità che il prodotto è conforme alle direttive citate.
NL - Wij verklaren geheel onder eigen verantwoordelijkheid dat het product voldoet aan de gestelde richtlijnen.
PL - Z pełną odpowiedzialnością oświadczamy, że produkt odpowiada postanowieniom wymienionych dyrektyw.
RO - Declaram pe proprie răspundere că produsul corespunde normelor prevăzute de directivele mai sus menționate.
SK - Na výlučnú zodpovednosť vyhlasujeme, že výrobok spĺňa požiadavky uvedených smerníc.
SV - Vi försäkrar att produkten på vårt ansvar är utförd enligt gällande riktlinjer.

WCFIX 260 (JP09268/1)
WCFIX PLUS (JP45387)
WCFIX PLUS UK (JP48517)

DE - Bevollmächtigt für technische Dokumentation CS - Oprávněná osoba pro technickou dokumentaci DA - Autoriseret person for teknisk dokumentation EN - Authorized person for technical documentation FI - Valtuutettu henkilö tekninen dokumentaatio FR - Personne autorisée à la documentation technique HU - Hivatalos személy műszaki dokumentáció IT - Persona abilitata per la documentazione tecnica NL - Bevoegd persoon voor technische documentatie PL - Pełnomocnik ds. dokumentacji technicznej RO - Persoană autorizată pentru documentație tehnică SK - Oprávněná osoba pro technickou dokumentaci SV - Autoriserad person för teknisk dokumentation.


JUNG PUMPEN - Steinhagen - Industriestr. 4-6 - 33803 Steinhagen

Steinhagen, 20-09-2018


i.V. Rudolf Kroll, Sales Manager



Stefan Srigas, General Manager

 0197	
JUNG PUMPEN GmbH - Industriestr. 4-6 33803 Steinhagen, Germany 13 451.11.1504	
EN 12050-3:2001 Hebeanlage zur begrenzten Verwendung	
WCfix 260 (JP09268/1)	
Automatisches Heben von Abwasser über die Rückstauenebene zur begrenzten Verwendung	


 0197	
JUNG PUMPEN GmbH - Industriestr. 4-6 33803 Steinhagen, Germany 13 451.11.1504	
EN 12050-3:2001 Lifting plant for limited applications	
WCfix 260 (JP09268/1)	
Automatic lifting of wastewater above the backflow level, for limited applications.	

BRANDVERHALTEN	NPD
WASSERDICHTHEIT, LUFTDICHTHEIT - Wasserdichtheit - Geruchsdichtheit	Bestanden Bestanden
WIRKSAMKEIT (HEBEWIRKUNG) - Förderung von Feststoffen - Rohranschlüsse - Mindestmaße von Lüftungsleitungen - Mindestfließgeschwindigkeit - Freier Mindestdurchgang der Anlage	Bestanden Bestanden Bestanden Bestanden Bestanden
MECHANISCHE FESTIGKEIT	Bestanden
GERÄUSCHPEGEL	≤ 70 dB(A)
DAUERHAFTIGKEIT - der Wasserdichtheit und Luftdichtheit - der Hebewirkung - der mechanischen Festigkeit	Bestanden Bestanden Bestanden
GEFÄHRLICHE SUBSTANZEN	NPD

REACTION TO FIRE	NPD
WATERTIGHTNESS, AIRTIGHTNESS - Water tightness - Odour tightness	succesvol succesvol
EFFECTIVENESS (LIFTING EFFECTIVENESS) - Pumping of solids - Pipe connections - Minimum dimensions of ventilating pipes system - Minimum flow velocity - Minimum free passage of the plant	succesvol succesvol succesvol succesvol succesvol
MECHANICAL RESISTANCE	succesvol
NOISE LEVEL	≤ 70 dB(A)
DURABILITY - of structural stability - of lifting effectiveness - of mechanical resistance	succesvol succesvol succesvol
DANGEROUS SUBSTANCES	NPD

 0197	
JUNG PUMPEN GmbH - Industriestr. 4-6 33803 Steinhagen, Germany 13 451.11.1504	
EN 12050-3:2001 Station de relevage pour une utilisation limitée	
WCfix 260 (JP09268/1)	
Relevage automatique des eaux usées au-dessus du niveau de refoulement pour une utilisation limitée	

RÉACTION AU FEU	NPD
ÉTANCHÉITÉ À L'EAU, ÉTANCHÉITÉ À L'AIR - Étanchéité à l'eau - Étanchéité aux odeurs	Bestanden Bestanden
EFFICACITÉ (PERFORMANCE DE RELEVAGE) - Refoulement de matières solides - Raccords de tuyaux - Dimensions minimales des conduites d'aération - Débit minimum - Passage libre minimal de l'installation	Bestanden Bestanden Bestanden Bestanden Bestanden
RÉSISTANCE MÉCANIQUE	Bestanden
NIVEAU SONORE	≤ 70 dB(A)
RÉSISTANCE - de la stabilité structurelle - de la performance de relevage - de la résistance mécanique	Bestanden Bestanden Bestanden
SUBSTANCES DANGEREUSES	NPD

 0197	
JUNG PUMPEN GmbH - Industriestr. 4-6 33803 Steinhagen, Germany 13 451.11.1504	
EN 12050-3:2001 Stazione di sollevamento per l'uso limitato	
WCfix 260 (JP09268/1)	
Sollevamento automatico di acque reflue al di sopra del livello di ristagno ad uso limitato	

INFIAMMABILITÀ	NPD
IMPERMEABILITÀ, ERMETICITÀ ALL'ARIA - Impermeabilità - Ermeticità agli odori	successvol successvol
EFFICACIA (CAPACITÀ DI SOLLEVAMENTO) - Pompaggio di materiali solidi - Collegamenti al tubo - Misure minime delle linee di ventilazione - Velocità di scorrimento minima - Passaggio libero minimo dell'impianto	successvol successvol successvol successvol successvol
RESISTENZA MECCANICA	successvol
SOGLIA DI RUMOROSITÀ	≤ 70 dB(A)
DUREVOLEZZA - della stabilità strutturale - della capacità di sollevamento - della resistenza meccanica	successvol successvol successvol
SOSTANZE PERICOLOSE	NPD

EN 12050-3:2001 Pompinstallatie voor beperkte toepassing	
WCfix 260 (JP09268/1)	
Automatisch pompen van afvalwater boven het terugstuwniveau voor beperkte toepassing	

BRANDGEDRAG	NPD
WATERDICHTHEID, LUCHTDICHTHEID - Waterdichtheid - Geurdichtheid	Pass Pass
RENDEMENT (POMPWERKING) - Transport van vaste stoffen - Buisaansluitingen - Minimum afmeting van verluchtungsleidingen - Minimum doorstromingssnelheid - Minimum vrije doorgang van de installatie	Pass Pass Pass Pass Pass
MECHANISCHE VASTHEID	Pass
GELUIDSNIVEAU	≤ 70 dB(A)
DUURZAAMHEID - van de structurele stabiliteit - van de pompwerking - van de mechanische vastheid	Pass Pass Pass
GEVAARLIJKE STOFFEN	NPD

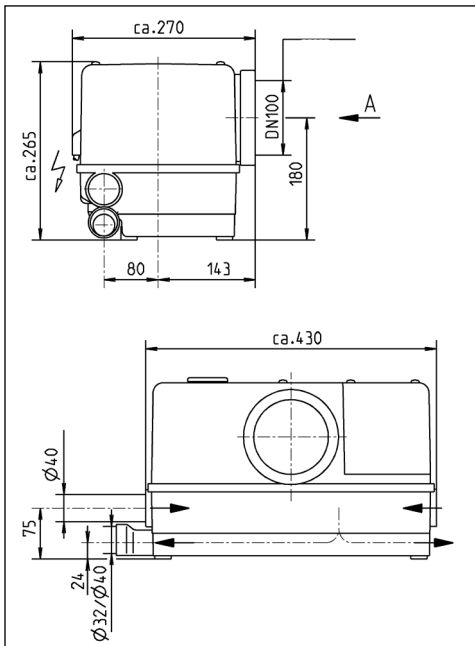
EN 12050-3:2001 Urządzenia do podnoszenia o ograniczonym użytkowaniu	
WCfix 260 (JP09268/1)	
Automatyczne przepompowywanie ścieków o ograniczonym zakresie stosowania powyżej poziomu cofki	

WŁAŚCIWOŚCI OGNIOWE	NPD
SZCZELNOŚĆ WODNA I POWIETRZNA - Szczelność wodna - Szczelność zapachowa	Pozytywnie Pozytywnie
SPRAWNOŚĆ DZIAŁANIA (SKUTECZNOŚĆ TŁOCZENIA) - Tłoczenie substancji stałych - Przyłącza rurowe - Wymiary minimalne przewodów wentylacyjnych - Minimalna prędkość przepływu - Minimalna, swobodna przepustowość instalacji	Pozytywnie Pozytywnie Pozytywnie Pozytywnie Pozytywnie
WYTRZYMAŁOŚĆ MECHANICZNA	Pozytywnie
POZIOM HAŁASU	≤ 70 dB(A)
TRWAŁOŚĆ I WYTRZYMAŁOŚĆ - stabilność konstrukcyjna - skuteczność tłoczenia - wytrzymałość mechaniczna	Pozytywnie Pozytywnie Pozytywnie
SUBSTANCJE NIEBEZPIECZNE	NPD

WHAT TO DO IN THE EVENT OF ANY PROBLEMS

Problem	Cause	Remedy
The unit does not work, and the water does not drain off	Power failure	Check supply voltage, change fuse if necessary, check supply cable ATTENTION! Special supply cable has to be changed only by qualified electricians.
	Blockage of the pump.	See cleaning and maintenance"
The water in the toilet-basin drains off very slowly	Blockage of the tank inlet, the pump intake or the tank ventilation caused by too much paper and not enough water.	Check flushing volume, if necessary adjust to 9l. If the water does not bank up into the toilet, flush 1x . If the unit operates repeat several times if necessary. If there is no change, please call your service.
	To much delivery height	See Technical data
Several starts after a single operation	If the water flows back into the unit after operation, the flap trap can leak or is defective, otherwise there can be a blockage in the tank or in the pump because of too much paper.	Use the flushing several times, if there is no change, please call your service.
The unit operates very noisy	Foreign objects in the pump	pump with motor must be disassembled, see maintenance
Periodic blocking	No homogenisation of the media	Extend follow up time until "snore" mode is heard briefly.

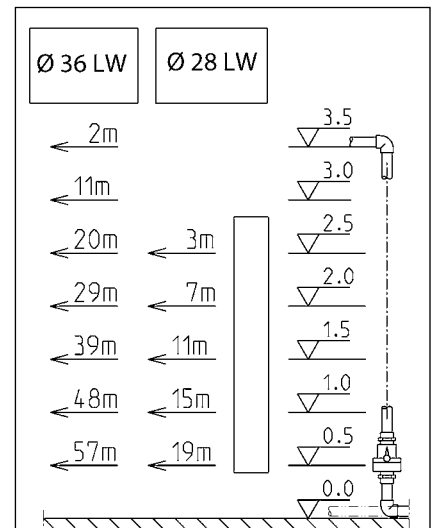
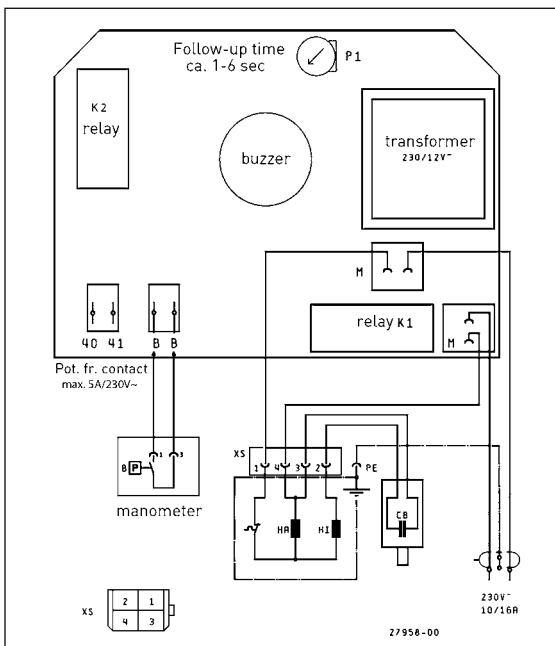
Technische Daten - Technical Data - Caractéristiques techniques - Technische gegevens - Dati tecnici



	[kg]	6,0
	DN	40
P1	[W]	400
P2	[W]	250
U	[V]	1/N/PE ~230
f	[Hz]	50
I	[A]	1,75

Leistung - Performance - Puissance
Capaciteit - Prestazioni

H [m]	1	2	3	3,5	4	
	133	111	87	75	61	Q [l/min]



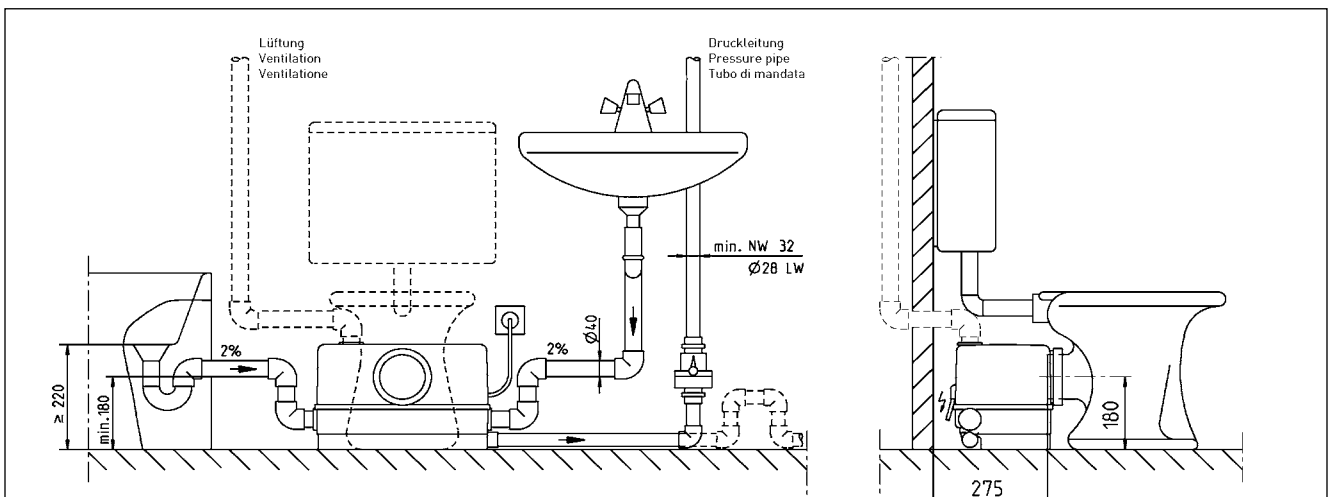
DE - Max. waagrechte Druckleitungslänge inkl. 2 Winkel und Rückschlagklappe 1/4"

EN - Max. horizontal length of pressure pipe incl. 2 elbows and swing-type check valve 1/4"

FR - Longueur max. de la conduite de refoulement horizontale avec 2 équerres et un clapet anti-retour 1/4"

NL - Max. horizontale persleidingslengte incl. 2 hoeken en terugslagklep 1/4"

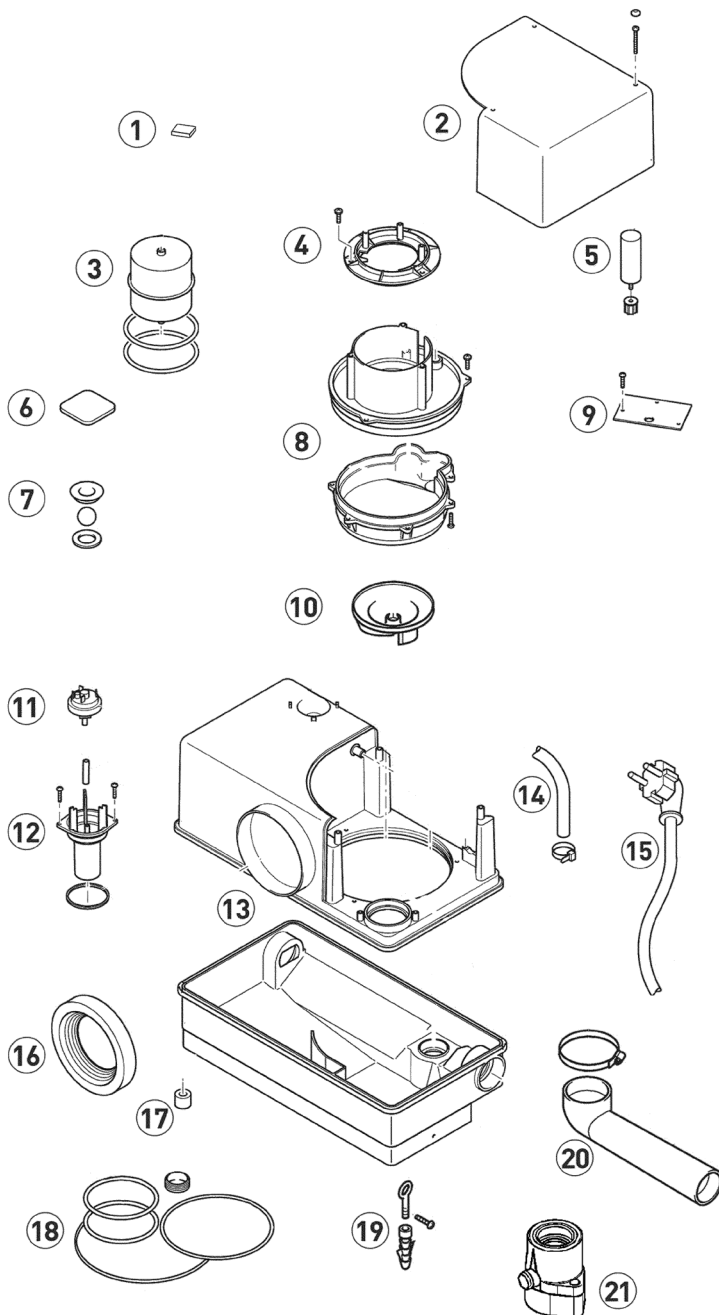
IT - Lunghezza orizzontale massima del tubo di mandata compresi 2 raccordi angolari e valvola di ritegno da 1/4"





WCFIX 260 (JP09268) • WCFIX 260A (JP09269)

Spare parts



①	Filter	Filter	JP47542
②	Haube	Hood	JP47518
③	Motor	Motor	JP47504
④	Druckstück	Thrust piece	JP48747
⑤	Kondensator	Capacitor	JP47515
⑥	Abdeckung	Cover	JP47510
⑦	Lüftungsventil	Ventilation valve	JP47511
⑧	Pumpengehäuse	Pump housing	JP47507
⑨	Platine	PCB	
	WCFix 260		JP47513
	WCFix 260 A		JP47514
⑩	Lauftrad	Impeller	JP47521
⑪	Druckschalter	Pressure switch	JP47509
⑫	Staurohr	Pilot tube	JP47508
⑬	Behälter	Tank	JP47503
⑭	Pumpenlüftung	Pump ventilation	JP47512
⑮	Netzleitung	Cable	JP47522
⑯	Toilettenanschluss	Toilet connection	JP47517
⑰	Gummifuß	Rubber foot	JP47516
⑱	Motorabdichtung	Motor sealing	JP47506
⑲	Auftriebssicherung	Bouyancy device	JP47519
⑳	Druckabgang	Pressure outlet	JP47520
㉑	Rückschlagklappe	Reflux valve	JP09739



**PUMP TECHNICAL
SERVICES LIMITED**



**JUNG
PUMPEN**