

cutting made easier

Multicut

SEWAGE PUMPS



Pump House, Unit 12 Bilton Road Industrial Estate, Erith, Kent, DA8 2AN
T: 01322 357080 E-mail: sales@pts-jung.co.uk Website: www.pts-jung.co.uk

JUNG-PUMPEN.EN



Multicut

For more than 35 years, MultiCut sewage pumps have been writing a success story with their reliable cutting system. Installed in numerous pump stations, they transfer waste water through the sewer system and play an essential role in residential and municipal waste water disposal.

Changing waste water

The increasing use of wet wipes and other hygiene products has changed the composition of waste water.

For years, providers of pump stations have repeatedly complained about failures and resulting repairs of sewage pumps. This situation does not only lead to annoyance, but also to extremely high municipal waste water costs.

The new cutting system

These changes in the waste water have prompted us to optimize the cutting system of the Multicut pumps and adapt them to the more challenging environmental conditions.

Both the cutting rotor and cutting plate have been improved. The resulting cutting technology combines two types of cutting technique: scissor type cut + chop

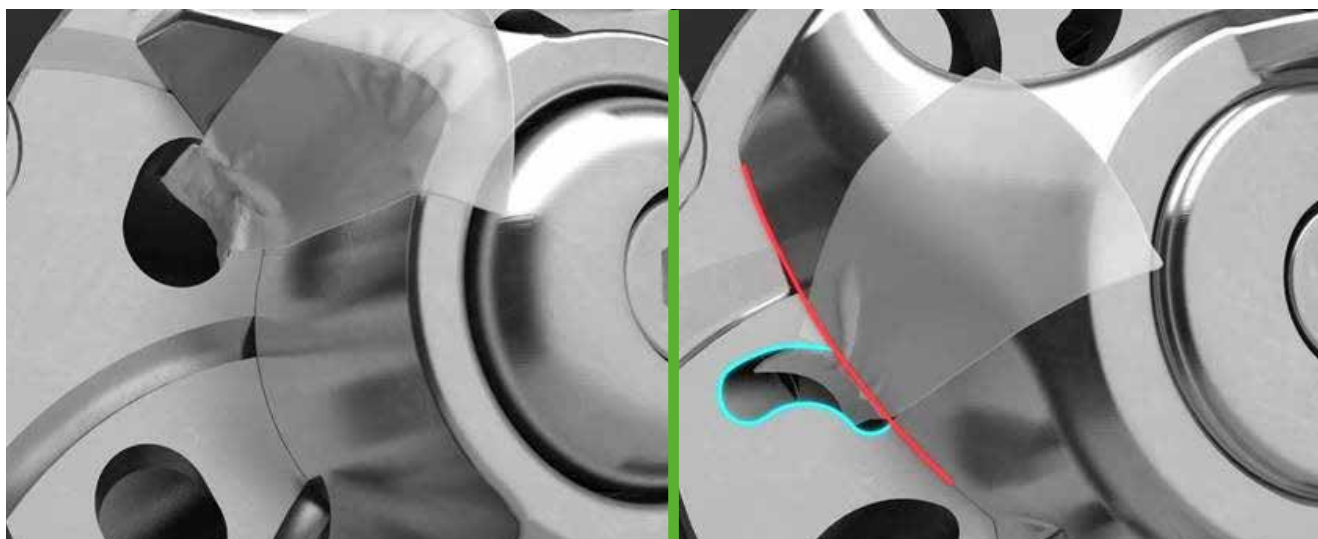
► **Two cuts are made per hole now**

► **Now 200,000 cuts per minute (three times more compared to the previous cutting system)**

► **Improvements result in less service calls due to pump blockages**

Proven technology remains!

The position of the cutting system is still in front of the pump hydraulics, ensuring that only shredded solids can enter the inside of the pump. This way the new MultiCut pumps continue to provide the well known quality.





Compatible with all previous models

Many pump stations are in operation for decades. Wear and tear is inevitable and some components have to be replaced from time to time.

Easy upgrade for existing pump stations

For existing pumps, the cutting system can be easily replaced by the new one (spare part). This way, these pumps are also prepared to handle the challenging conditions in today's waste water and shred the annoying solids reliably.

Simple refitting of existing systems

Disassembly tool for easy removal of the cutting system

Easy maintenance

A useful tool

The new disassembly tool enables convenient removal of the cutting rotor from the rotor shaft in order to replace the system or to re-adjust the cutting gap.



Technical details

| Code No. | Material name | H max [m] | Q max [m ³ /h] | Voltage [V] | P ₁ [kW] | P ₂ [kW] | Current [A] | 10 m cable pluggable |
|----------------|-------------------------|--------------|------------------------------|----------------|------------------------|------------------------|----------------|-------------------------|
| JP50342 | Multicut 08/2 ME | 14,5 | 16,5 | 1/N/PE~230 | 1.37 | 0.98 | 6.0 | H07 RN-F 6G 1.5 |
| JP50343 | Multicut 08/2 MES | 14,5 | 16,5 | 1/N/PE~230 | 1.37 | 0.98 | 6.0 | H07 RN-F 6G 1.5 |
| JP50344 | Multicut 08/2 M | 18,5 | 18,5 | 3/PE~230/400 | 1.65 | 1.24 | 2.8 | H07 RN-F 6G 1.5 |
| JP50345 | Multicut 08/2 MS | 18,5 | 18,5 | 3/PE~230/400 | 1.65 | 1.24 | 2.8 | H07 RN-F 6G 1.5 |
| JP50346 | Multicut 08/2 M, EX | 18,5 | 18,5 | 3/PE~230/400 | 1.65 | 1.24 | 2.8 | H07 RN-F 6G 1.5 |
| JP50350 | Multicut 20/2 M PLUS | 24 | 18 | 3/PE~230/400 | 2.40 | 1.91 | 4.0 | H07 RN-F 6G 1.5 |
| JP50356 | Multicut 25/2 ME | 24 | 17 | 1/N/PE~230 V | 2.70 | 2.04 | 12.0 | H07 RN-F 6G 1.5 |
| JP50357 | Multicut 35/2 M | 35 | 16 | 3/PE~230/400 | 3.70 | 3.04 | 6.6 | H07 RN-F 6G 1.5 |
| JP50363 | Multicut 36/2 M | 38 | 16 | 3/PE~230/400 | 4.20 | 3.42 | 7.3 | H07 RN-F 6G 1.5 |
| JP50369 | Multicut 45/2 M | 45 | 10 | 3/PE~230/400 | 4.84 | 3.93 | 7.9 | H07 RN-F 6G 1.5 |
| JP50375 | Multicut 75/2 M | 49 | 17 | 3/PE~230/690 | 7.70 | 6.60 | 13.2/7.7 | H07 RN-F 6G 1.5 |
| JP50377 | Multicut 76/2 M | 55 | 13 | 3/PE~230/690 | 7.70 | 6.60 | 13.2/7.7 | H07 RN-F 6G 1.5 |
| JP50352 | Multicut 20/2 M PLUS EX | 24 | 18 | 3/PE~230/400 | 2.40 | 1.91 | 4.0 | H07 RN-F 6G 1.5 |
| JP50355 | Multicut 25/2 ME, EX | 24 | 17 | 1/N/PE~230 V | 2.70 | 2.04 | 12.0 | H07 RN-F 6G 1.5 |
| JP50359 | Multicut 35/2 M, EX | 35 | 16 | 3/PE~230/400 | 3.70 | 3.04 | 6.6 | H07 RN-F 6G 1.5 |
| JP50365 | Multicut 36/2 M, EX | 38 | 16 | 3/PE~230/400 | 4.20 | 3.42 | 7.3 | H07 RN-F 6G 1.5 |
| JP50371 | Multicut 45/2 M, EX | 45 | 10 | 3/PE~230/400 | 4.84 | 3.93 | 7.9 | H07 RN-F 6G 1.5 |
| JP50376 | Multicut 75/2 M, EX | 49 | 17 | 3/PE~230/690 | 7.70 | 6.60 | 13.2/7.7 | H07 RN-F 6G 1.5 |
| JP50378 | Multicut 76/2 M, EX | 55 | 13 | 3/PE~230/690 | 7.70 | 6.60 | 13.2/7.7 | H07 RN-F 6G 1.5 |
| JP50362 | Multicut 35/2 M Tan, EX | 69 | 16 | 3/PE~230/400 | 3.70 | 3.04 | 6.6 | H07 RN-F 6G 1.5 |
| JP50368 | Multicut 36/2 M Tan, EX | 77 | 16 | 3/PE~230/400 | 4.20 | 3.42 | 7.3 | H07 RN-F 6G 1.5 |
| JP50374 | Multicut 45/2 M Tan, EX | 86 | 10 | 3/PE~230/400 | 4.84 | 3.93 | 7.9 | H07 RN-F 6G 1.5 |