

# MULTICUT

## SEWAGE PUMPS

- Reliable solids transport due to improved cutting technology
- External adjustable cutting mechanism
- Controllable oil chamber
- SiC mechanical seal independent of sense of rotation
- Moisture-sealed cable inlet with plug-in cable connection
- Installed motor protection



### DESCRIPTION

Centrifugal submersible sewage pumps fitted with the MultiCut cutting system are used as stationary appliances in pressurised drainage systems for discharge in sparsely populated areas or of detached houses. They are suitable for pumping domestic wastewater with the usual additions (as specified in German standard DIN 1986, Part 3).

For pumping from ducts which are connected to the public sewer system, explosion-proof submersible pumps of the UFK series have to be used. On account of the upstream cutting system, the pressurised line as from DN 32 - as from DN 80 minimum without cutting system - may be routed parallel to the terrain.

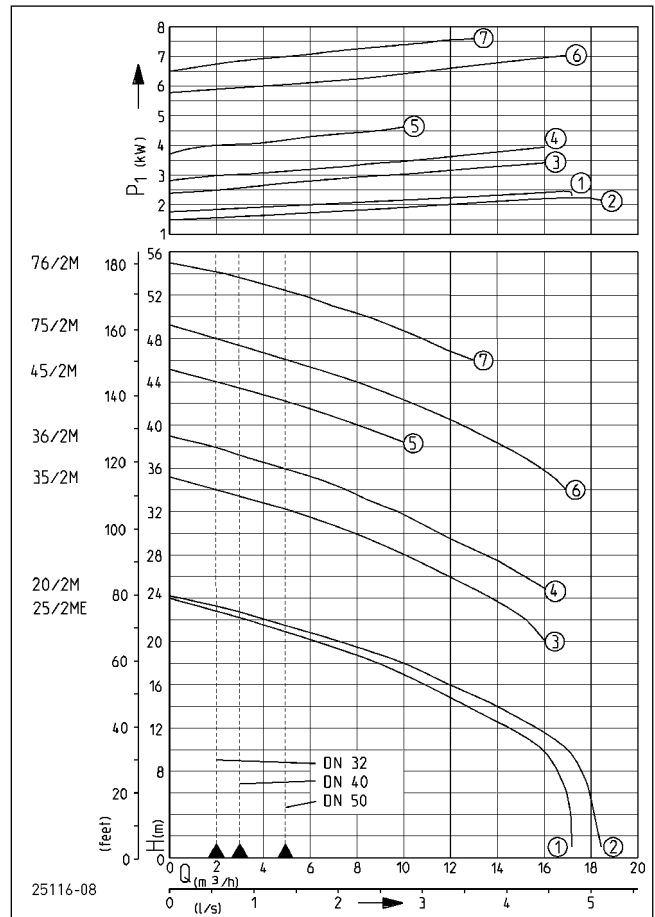
Operating conditions up to a temperature of the material to be transported of 40° Celsius

Submerged motor: Continuous operation (S1)

Emerged motor: Intermittent operation (S3) (e.g. 20% = 2 min. operation, 8 min. break)

The unique MultiCut cutting system ensures a maximum of operational safety at outstanding delivery characteristics. Fitted with a cutter plate made of hardened stainless steel and a three-bladed knife, it disintegrates coarse additions in the wastewater with more than 200,000 cutting processes per minute before they can get into the pump hydraulics. Solids which cannot be transported are rejected outside of the pump by the cutting rotor as the cutting system is located upstream from the pump hydraulics. Specifically arranged grooves on the cutter plate ensure additional safety as the cutting unit is permanently cleaned automatically during the delivery.

### PERFORMANCE



Type	Delivery head H [m]	6	9	12	15	18	21	25	28	32	34	36	38	40	44	46	48	50	52	54
20/2 M plus	Flow rate Q [m³/h]	18	17	16	13	10	6													
25/2 ME		17	16	15	12	9	5													
35/2 M							16	13	10	5										
36/2 M								16	14	10	7	5	2							
45/2 M													10	8	2					
75/2 M											17	16	15	13	8	5	2			
76/2 M																13	11	9	6	3

Specifications can be changed without notice. Performance subject to ISO 9906 tolerances. The minimum flow velocity in the pressure piping must be 0.7 m/s according to EN 12056. This data is represented in the performance curve as a limit of application.



# MULTICUT

## SEWAGE PUMPS

### SCOPE OF SUPPLY

Sewage pump with or without explosion-proof in keeping with German/European standard EN 12050 with 10 m cable, without plug, without base.

Ex II 2 G Ex db IIB T4 Gb

Special technical note for 25/2 ME:

As the rated output of the motor exceeds 1.4 kW, the permission of the local power supply organisation has to be obtained prior to ordering and commissioning. A soft starting device (starting current approx. 33A) can only be installed in the contro unit AD 12 ExME if a new order is placed in the factory.

### MECHANICAL DATA

Pump	Vertical single-stage	Run dry protection	Yes
Bearing	Ball bearings, grease-lubricated	Impeller	Vortex impeller, grey cast iron 20/2 M: GFK
Seal on motor side	Duplex shaft seal, from 75/2M: mechanical seal	Motor housing	Grey cast iron
Oil chamber	Yes	Pump housing	Grey cast iron
Seal on medium side	SiC mechanical seal	Submersible	Yes
		Pressure outlet	DN 32

### ELECTRICAL DATA

Power line	10m H07RN-F	Winding thermostat	Yes
Type of enclosure	IP 68	Motor protection	Thermostat
Insulation class	F		

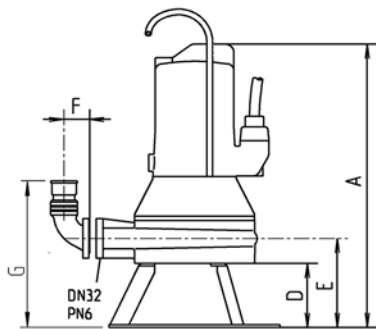
### MULTICUT

Type	Code No.	Voltage	Motor rating		Current	Wires	Fuse	S3	Weight
			P1	P2					
<b>Without ex-proof</b>									
20/2 M plus	<b>JP50350</b>	3/PE~400 V	2.40 kW	1.91 kW	4.0 A	6G1,5	10 A	25 %	29.0 kg
25/2 ME	<b>JP50356</b>	1/N/PE~230 V	2.70 kW	2.04 kW	12.0 A	6G1,5	16 A	35 %	38.0 kg
35/2 M	<b>JP50357</b>	3/PE~400 V	3.70 kW	3.04 kW	6.6 A	6G1,5	10 A	40 %	40.5 kg
36/2 M	<b>JP50363</b>	3/PE~400 V	4.20 kW	3.42 kW	7.3 A	6G1,5	10 A	30 %	40.5 kg
45/2 M	<b>JP50369</b>	3/PE~400 V	4.84 kW	3.93 kW	7.9 A	6G1,5	10 A	25 %	42.0 kg
75/2 M	<b>JP50375</b>	3/PE~400/690 V	7.70 kW	6.60 kW	13.2 A/7.7 A	10G2,5	20 A	30 %	90.0 kg
76/2 M	<b>JP50377</b>	3/PE~400/690 V	7.70 kW	6.60 kW	13.2 A/7.7 A	10G2,5	20 A	30 %	90.0 kg
<b>With ex-proof</b>									
20/2 M plus, Ex	<b>JP50352</b>	3/PE~400 V	2.40 kW	1.91 kW	4.0 A	6G1,5	10 A	25 %	29.0 kg
25/2 ME, Ex	<b>JP50355</b>	1/N/PE~230 V	2.70 kW	2.04 kW	12.0 A	6G1,5	16 A	35 %	38.0 kg
35/2 M, Ex	<b>JP50359</b>	3/PE~400 V	3.70 kW	3.04 kW	6.6 A	6G1,5	10 A	40 %	40.5 kg
36/2 M, Ex	<b>JP50365</b>	3/PE~400 V	4.20 kW	3.42 kW	7.3 A	6G1,5	10 A	30 %	40.5 kg
45/2 M, Ex	<b>JP50371</b>	3/PE~400 V	4.84 kW	3.93 kW	7.9 A	6G1,5	10 A	25 %	42.0 kg
75/2 M, Ex	<b>JP50376</b>	3/PE~400/690 V	7.70 kW	6.60 kW	13.2 A/7.7 A	10G2,5	20 A	30 %	90.0 kg
76/2 M, Ex	<b>JP50378</b>	3/PE~400/690 V	7.70 kW	6.60 kW	13.2 A/7.7 A	10G2,5	20 A	30 %	90.0 kg

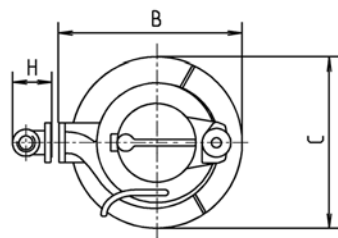
# MULTICUT

## SEWAGE PUMPS

### Dimensions pump base (mm)



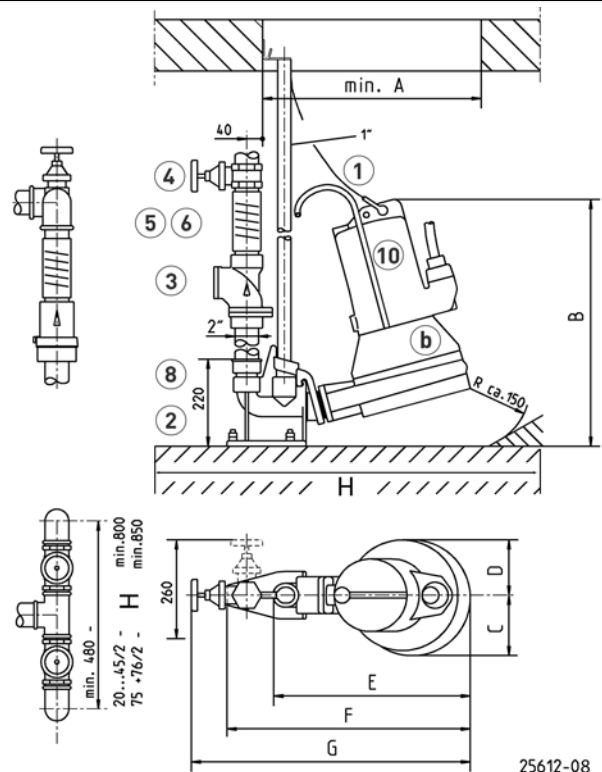
1 1/4"  
1 1/4"-1 1/2"



Typ	A	B	C	D	E	F	G	H
20/2M	440	290	230	100	140	60	230	90
25/2ME	520	330	250	140	180	60	270	90
35/2M+36/2M	520	330	250	140	180	60	270	90
45/2M	520	330	255	140	180	60	270	90
75/2M+76/2M	665	430	400	150	210	60	300	90


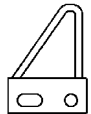

22625-09

### Example of guide rail installation (mm)



	A	B	C	D	E	F	G	H	min.
20/2M plus	430	450	110	110	380	500	585	400 x 700mm	
25/2ME-36/2M	470	490	125	125	420	540	635	400 x 700mm	
45/2M	470	490	130	125	420	540	635	400 x 700mm	
75/2M+76/2M	545	625	155	140	500	615	705	400 x 800mm	

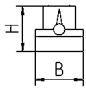
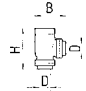
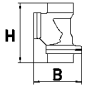
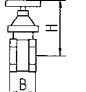
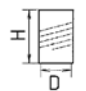

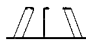


### MECHANICAL ACCESSORY

			Code No.
	<b>1 Chain</b>	certified, 2.5 m, 320 kg, 5 rings (EN 818 mod.)	<b>JP45901</b>
		certified, 5.0 m, 320 kg, 8 rings (EN 818 mod.)	<b>JP45902</b>
		certified, 7.5 m, 320 kg, 11 rings (EN 818 mod.)	<b>JP47365</b>
		Shackle, certified, 630 kg, stainless steel	<b>JP45904</b>
		Pump hanging (08 Ex - 100...)	<b>JP45925</b>
	<b>2 Guide rail system</b>		
	GR 35	1 1/2" female thread for MultiCut pumps	<b>JP14094</b>
	Guide rail 1"	1500 mm	<b>JP48937</b>
	Guide rail 1"	2000 mm	<b>JP48938</b>
	Guide rail 1"	2500 mm	<b>JP48939</b>
	Guide rail 1"	3000 mm	<b>JP48940</b>
	<b>Dislocate of grafity center</b>	MultiCut 75... and 76...	<b>JP44757</b>


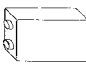
# MULTICUT

## SEWAGE PUMPS

### MECHANICAL ACCESSORY

				Code No.		
	③	<b>Swing-type check valve</b>				
		R40	EN 12050-4	1½" (DN 40), PN 4	150x120 (HxB)	JP00317
		R50	EN 12050-4	2" (DN 50), PN 4	150x120 (HxB)	JP00326
		<b>Ball-type check valve</b>				
		KE40	EN 12050-4	1½" (DN 40), PN 6	170x125 (HxB)	JP47974
		K50	EN 12050-4	2" (DN 50), PN 6	185x155 (HxB)	JP44782
	④	<b>Stop valve</b>		brass, 1½" (DN 40), PN 16	125x60 (HxB)	JP44786
				stainless steel, 1½" (DN 40), PN 16	125x80 (HxB)	JP48403
				brass, 2" (DN 50), PN 16	140x70 (HxB)	JP44787
	⑤	<b>Elastic connection</b>		1½" (DN 40), PN 4	120x50 (HxD)	JP44777
				2" (DN 50), PN 4	150x63 (HxD)	JP44775
	⑥	<b>Hose band clamp</b>		1½"		JP44763
				2"		JP44764
	⑦	<b>Pump base</b>		20/2M		JP44759
				M	25/2ME - 45/2M	JP20980
				M 220	75/2M - 76/2M	JP22302
		<b>Retaining plate</b>		in connection with startic-air level control		JP23100
		⑧	<b>Reducing socket</b>		1¼"-1½"	
			1¼"-2"		JP44772	
			1 1/2"-2" for guide rail system GR 35		JP44776	
	⑨	<b>Pipe connection</b>		1 1/4" (female thread)		JP16870
		⑩	<b>Flushing tube</b>		Type 0	08 Ex, 20/2
			Type I	10/... - 45/...	JP28221	
			Type II	55/... - 100/...	JP28222	


### ELECTRICAL ACCESSORY

				Code No.	
	a	<b>Control for single units</b>			
		Control unit AD 12 ExME, TLS		25/2 ME	JP43163
		soft starting device			JP24138
		Control unit HIGHLOGO 1-46 LC			JP47985
		Control unit AD 46 ExM, TLS		20/2 M	JP43160
		Control unit HIGHLOGO 1-610 LC			JP47986
		Control unit AD 610 ExM, TLS		35/2 M - 45/2 M	JP43161
		<b>Control for duplex units</b>			
		Control unit HIGHLOGO 2-46 LC			JP47994
		Control unit BD 46 ExM, TLS		20/2 M	JP43166
Control unit HIGHLOGO 2-610 LC			JP47995		
Control unit BD 610 ExM, TLS		35/2 M - 45/2 M	JP43167		
	<b>Rechargeable battery</b>		9 V, for mains independent alarm	JP44850	

# MULTICUT

SEWAGE PUMPS

## ELECTRICAL ACCESSORY

			Code No.
	<b>b Seal leak detector</b>	DKG	JP44900
		DKG Ex for explosion-proof pumps	JP00249
	<b>Smart Home</b>	FTJP radio transmitter	JP47209